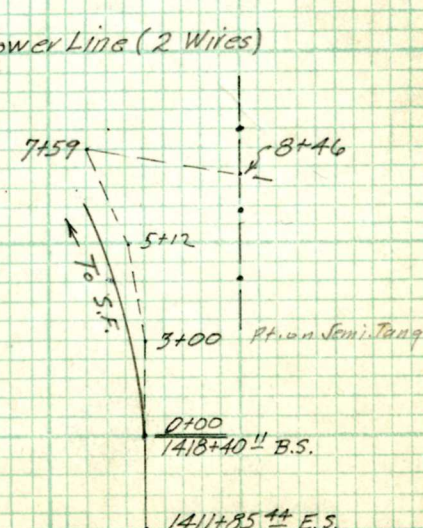
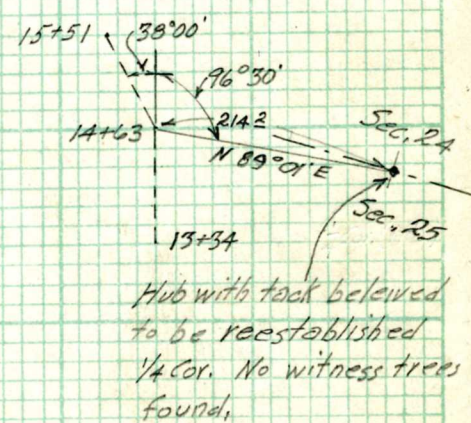


THE WESTERN PACIFIC RAILROAD COMPANY

DATE Jan. 4 1941 FORM 555 SURVEY No. _____
 ENGINEER C.C. Fory STATION Clio
 RODMAN A. Switzer M. P. 313+ PAGE 1 OF 2
 CHAINMAN R.J. Benish
 DESC. OF WORK Location of Spring North of Clio.

Station	Deflection		Bearing	Remarks
	Lt.	Rt.		
21+74	28°18'			
20+75			N 42°14' W	Wash 40° Rt.; 5° Lower.
20+08	30°50'		N 11°44' W	
18+57		46°50'	N 58°14' W	
17+61	45°15'		N 9°59' W	
16+38		13°00'	N 22°59' W	
15+51		22°30'	N 45°29' W	
14+63	38°00'		N 7°29' W	
13+34	10°00'		N 2°31' E	
12+46		24°50'	N 21°59' W	
11+24	26°00'		N 4°01' E	
10+32	7°30'		N 71°31' E	
9+00	14°30'		N 77°46' W	
8+46			N 26°01' E	REA. Power Line (2 Wires)
7+59		130°40' Rt.	S 75°21' W	
5+12	2°25' Lt		S 77°46' W	
3+00	12°40' Lt		N 89°34' W	
0+00	0°	0°	N 89°34' W	
1418+40" B.S. M.L. Sta.				1418+40" B.S.
1411+85" E.S.				1411+85" E.S.



24
25

11

