

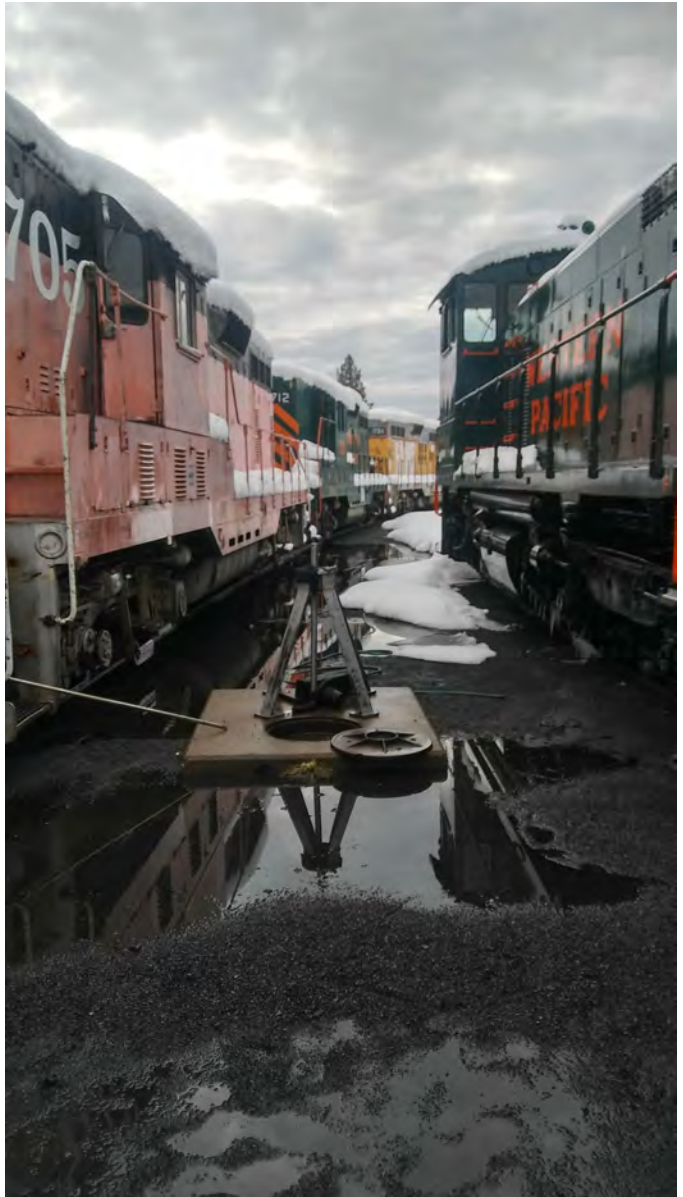
Flood & Fire

The big water riser on 3 Rail by WP 1503 went out of service on January 17th. Ethan Doty had to temporarily shut off the main water valve in order to shut off old faithful so he could get into the vault underneath without getting soaked in 36 degree weather.

The photo is the water flood after he had gotten the water turned off, so it had receded a little at that point.

Ethan says he heard it when he went to see if the backhoe would start easy to make a quick plow job since the snow was just powder. He hadn't intended on being at the museum that long to start with. Oh well, life in Portola.

Then on Wednesday night, February 26/27, 2020, WP caboose 646 was damaged by fire, cause unknown and is under investigation. The caboose was outside the museum fence line next to the UP MOW track.



- photo above by Ethan Doty
WP 646 on the morning of 2/27/20
- photo left by Greg Elems



Catch the Early Train!

*Get your Train Sheet by email and you will get it before the post office even receives it and it is in COLOR!
(and you save the FRRS money too!)*

*Send an email requesting email delivery to **membership@wplives.org** with your name and email address.*

