

**WPRM Steam Dept Update First Quarter 2015**

-Chris Allan, FRRS Steam Department Coordinator

As many of you know, just because the Museum is closed for the winter, doesn't mean that work isn't getting done on the WP 165 project.

Recent efforts have been focused on completing the FRA Form 4, the extensive document being prepared by Dave Varley. This is the boiler survey we submit to the Federal Railroad Administration outlining the general condition of the boiler, as well as the calculations that lead us to the MAWP, or Maximum Allowable Working Pressure that the engine will operate at. The last of the details to be filled in include testing of the samples obtained from the two barrel courses by Channing. Both carbon content and tensile tests are now being performed to aid us in determining the stresses allowed in these sections of the pressure vessel.

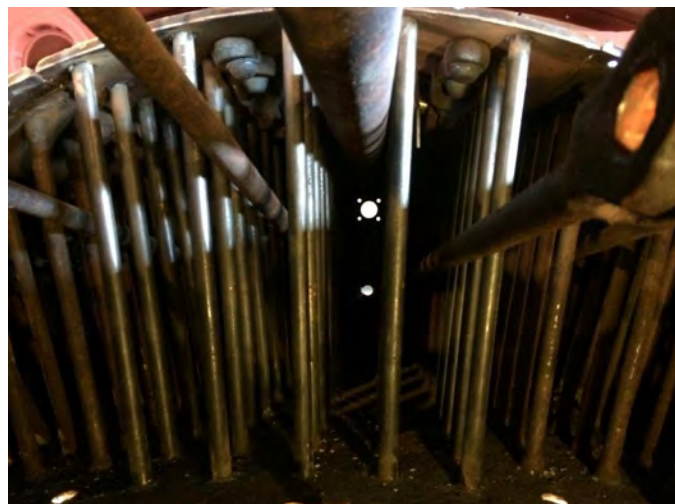


Dave Varley crunches data on an out-rigger of the WPMW 37.

Our boilermaker Norman has been spending time prepping the patches for welding in March. He has also been tacking in a good number of the new staybolts in the patch areas as well as grinding out cracks, etc. This is the procedure on many of these boilers that have seen a good deal of service in their lives, and now we are asking even more.

Down here in Southern California, I have been busy in the shop repairing some of the fussy detail parts to place back on the engine in the spring, including the gauge stands, handles, and other components.

Kirk, Dave A. and Duane continue to clean up the



The forest of staybolts.

tender frame and miscellaneous locomotive parts as time allows. This helps greatly down the road, during work sessions it is simply a matter of bolting them back up. Thanks to these guys for keeping with it. Also thanks to Steve Habeck and the switching crew for making sure the engine and tender are in position when we need it to be!

Our next work session is **May 6th-9th 2015**. I hope to see some significant progress this season, so come on up to Portola and see for yourself! And as always, please consider a tax-deductible donation, in any amount, to the WP 165 Steam Fund. Let's keep the momentum going!



The gauge stand in progress.