

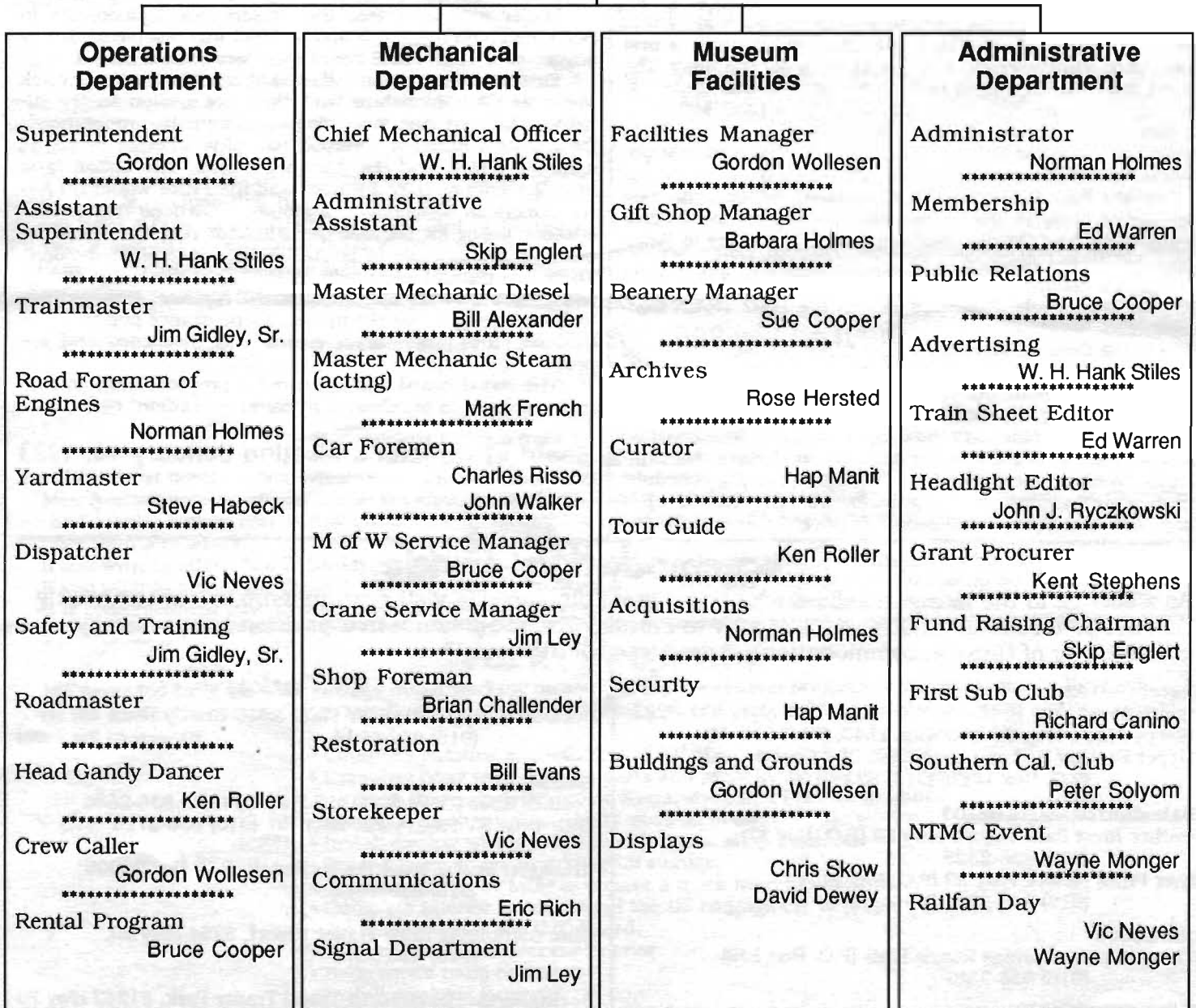
1993 Feather River Rail Society Organizational Chart

Feather River Rail Society - Membership

Board of Directors

President	Norman Holmes
Vice President	W. H. Hank Stiles
2nd Vice President	Bruce Cooper
Secretary	Wayne Monger
Treasurer	Gordon Wollesen
Member	Kent Stephens
Member	Vic Neves

Museum General Manager - Norman Holmes



Volunteers