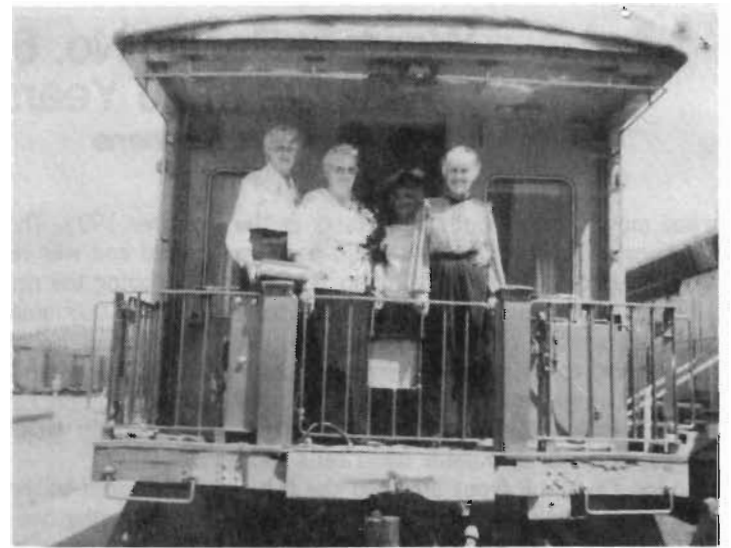


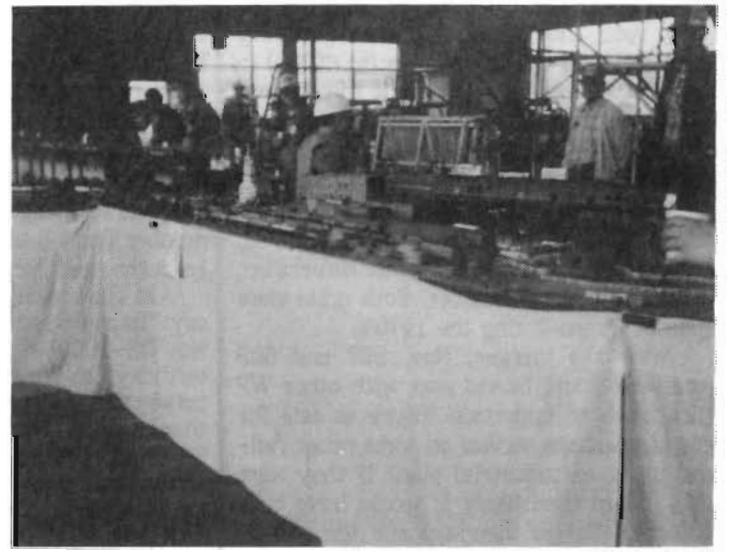
UP's newly named sleeper -- "Portola" as seen on the Mike Walsh Silver Anniversary Special in Portola on June 30, 1990



From left to right -- Susie Roode (A CSRM docent), Katie McNeill, Belmeda Hood, and Ellen Hausen on our UP 105 car.



Ron Mathew from R.G. Mathew, Inc. in Grass Valley is shown installing an ice melting device on our terminal switch to test it.



A modular model RR layout on display in our engine house on Railroad Days.



GP7 WP707, F7 WP921D, and GP30 UP849 lined up for a portrait in front of our engine house.



Gordon Wollesen (left) and Hank Stiles (right) hold up the 6'2" X 5'3" rug that was donated by Dave Trussell.