



FP7-A WP 805-A

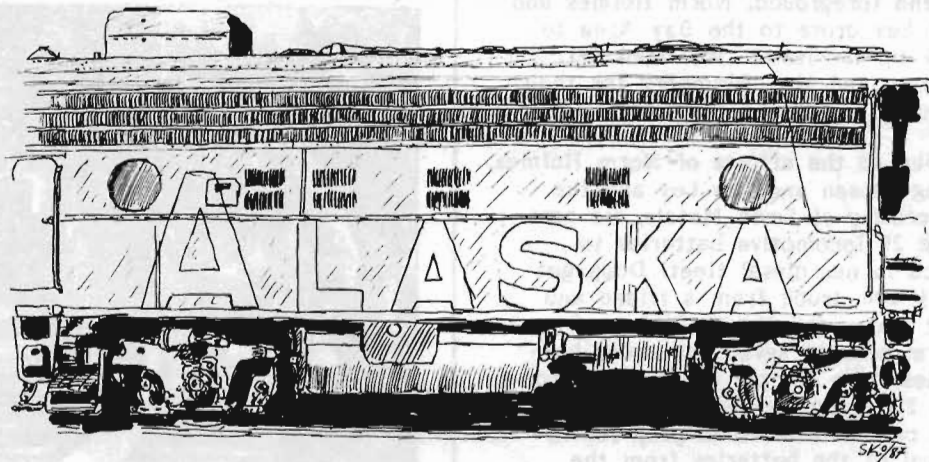
As this issue's cover shows leading every Silver Lady was a Great Locomotive.....

The opportunity is currently at hand to save and restore the last Western Pacific California Zephyr locomotive FP7 805-A. In the interest of preserving this classic diesel locomotive, the Feather River Rail Society is working with CTC BOARD Magazine and Mountain Diesel Transportation to raise the necessary monies to allow the FRRS to purchase the 805 and return it to Portola for restoration. Those interested in making a pledge or a tax-deductible donation to the FRRS to be used towards the purchase of the 805 should contact..... Mountain Diesel Transportation 6111 Oakgreen Circle Carmichael, California 95608-1010 or call 916-965-1508 for further information.

Letters-WE GET LETTERS- a sample Enclosed is my check for membership renewal.....\$15 seems like such a bargain for a museum and a news letter. I've made the check for \$30 to give you some extra for the coming year....Enclosed is our check for 1987 dues. Keep up the good work... Herewith my check for membership in your fine and worthy association.... Along with the field work, I think the "Train Sheet" is outstanding....

HELP WANTED

Prior to WWII, WP ran "snow specials" between Oakland and Norvel on the Highline. We would like to do a story on this service and would appreciate any help our members could furnish on this subject. We also are in need of copies (org or zerox) of WP's employee magazine "HEADLIGHTS" George Comer sent in several copies of the missing mileposts we are still in need of the following.....
December 1969
From Fall 1978 to
May-June 1980
Can you help.....



ALASKA in PORTOLA

Six-count em-six Alaska F7 units are now in the Portola Railroad Museum, thanks to the efforts of Mark Hemphill, Dale Sanders, & Tom Carver.

These members formed Mountain Diesel Transportation Co., purchased the units from the Alaska Railroad and had them transported by Hydrotrain barge to Seattle. UP graciously agreed to transport them to Portola without charge as they are leased to the FRRS for display and use at our museum. We now have more preserved covered wagon units than any other museum.....

They are....

- 1506 F7A
- 1507 F7B
- 1508 F7A
- 1510 FP7A
- 1512 FP7A
- 1517 F7B

All the F units were purchased new by the Alaska Railroad except 1517, a F7B, which was originally a D&RGW unit. Plans are to repaint the FP7A's into WP's passenger diesel color scheme. All units except 1507, a F7B, are in operable condition, but will need minor repairs. No. 1507 needs engine work, a main generator, traction motor leads, complete wiring and other parts. It has a good body, however, and "B" units are rare. We are extremely fortunate to have these units in our museum. Although thousands were built, fewer than 100 remain today. Plan a trip to Portola and look over these units it's worth the trip.....

EQUIPMENT ARRIVALS

Union Pacific has again honored our request for the donation of Western Pacific equipment to our preservation efforts. Double plug door insulated box car WP 64004, ballast car WP 10649, a 50 ton Brownhoist crane WPMW 90, a 50ft 1925 flat car WPMW 79-4 and UP CA-5 caboose 905003, have all been added to our collection. Only a few more cars are needed to complete our representation of all WP car types. And as the TS is being prepared GP-7, 707 has arrived in Portola. Dave McClain was going to give it a once-over and hopefully no more damage was done to it as it sat open in Salt Lake City. Dave and Ski on their last trip to SLC got all the parts needed to repair the damage caused by transients.

DONATIONS

Santa Claus was good to us this year. In addition to a goodly amount received in donations from members along with their 1987 dues, we received the following:

From Mark Hemphill and Tom Carver Alaska Railroad car No P-4. This is a former WWII Army kitchen car converted to a power car (steam generator, power plant and air compressor) for service on Alaska's first Streamline Passenger Train.

From Dale Darney, six old WP station track blue prints showing track diagrams of Keddie, Reno, Sand Pass, Gerlach, Winnemucca and Elko. ca. 1913-1927....

From Jim Harper, two caboose markers and a switch lamp.....

From Mary Jo Leigh, a box of telegraph office paper items.

Former Western Pacific President Myron Christy knew of some important artifacts our museum would like for our collection. He contacted Mrs. Walter Brumberg and arranged for the donation of the binnacle from WP's tugboat HUMACONNA, steam bell from WP #71, a three foot square linoleum mural from a CZ club car, a builders plate from WP #260, a CZ cookbook and a framed poster depicting a San Francisco scene with the Las Plumas

in the foreground. Norm Holmes and Jim Ley drove to the Bay Area to pick up the items. We thank Mr. Christy and Mrs. Blumberg for their thoughtfulness and generosity.

Due to the efforts of Norm Holmes, Doug Jensen and Jim Ley and the generosity of Levin Metals, we now have 20 locomotive batteries to place in our diesel fleet. Doug got a 1½ ton truck from a friend and met Norm and Jim in Richmond. Norm brought seven bad order batteries from Portola as trade-ins for the 20. Doug arrived first and had the cables removed in prep for removal of the batteries from the soon-to-be scrapped SP U33C's. With the help of Levin's fork lift the 400+ lb batteries were loaded onto the two trucks. Also removed some misc. items including a water cooler, brake valves, and radio parts. Back in Portola, the batteries were charged and seem to be OK. Each locomotive needs eight batteries (8 volts each, for a 64 volt system) A new set of batteries cost about \$2000...

Retired WP Road Foreman of Engines Norman Roberts died in Oroville in December after a long illness. The family requested any donations to his memory be made to our Rail Society. All donations received are most appreciated.

In 1985, Norm Holmes advanced the money needed to purchase our Santa Fe diner. As funds never seemed to be available for repayment, Norm decided to donate the diner before years end. Norm also donated a 1957 PFE ice reefer car he also purchased in 1985. In addition he donated a steam boiler, a number of motor car wheels, along with many misc. parts.....

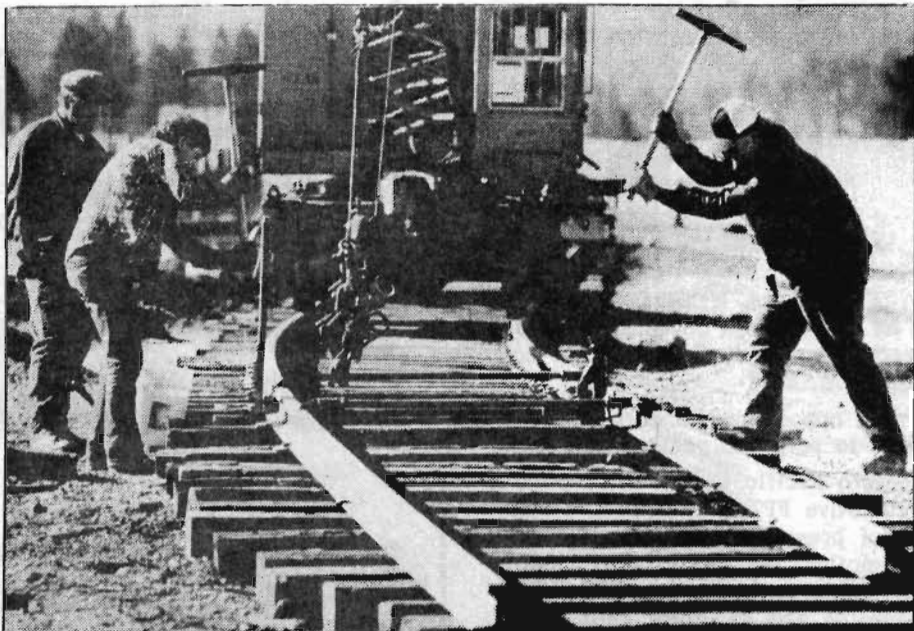
Bob Barlow & Associates, a Blairsden real estate firm, donated a good used IBM copy machine. This will be very useful and is most appreciated. Thanks all.....

Additional Donations.....

Thanks to the UP Portola Train-Master we now have a number of steel lockers to place in the diesel shop building. Once in place members will be able to keep a change of clothes, tools, etc. in their own locker.

Dr. Carl Bajema sent us a nice 24"X36" relief map of the High Sierra country. This will make an interesting display for our visitors.

John Hachey donated plexiglass for the missing window glass in



Jean Dixon Alkin/Gazette-Journal

WORKIN' ON THE RAILROAD: Ken Rollins, left, Hank Stiles and Matt Parker, members of the Feather River Rail Society, put down new railroad ties and rails as they expand the tracks at the Portola Railroad Museum. The storage area also was expanded. Winter hours for the museum are Saturday and Sunday, 10 a.m. to 4 p.m.

2001. The plexiglass will be installed as soon as weather permits. Restoration of this locomotive is our number one priority this year.

Norm Holmes added up the bills and found he had paid \$475 for long-distance phone calls made for the museum in 1986. Norm also put over 5,000 miles on his pickup doing museum business.

PORTOLA TRACK WORK

Track work continued through Dec with the unseasonable good weather. Ken Roller worked almost daily spiking, aligning and tamping our newest track connection to the old rip track. This track is now in service and as soon as switch parts are found construction of Rip #2 will begin. Also assisting in track work were Jim Ley, Mat Parker, Steve Hunter and others.....

CONTRIBUTING MEMBERS

The following 56 members have contributed \$2702 to our general fund with donations ranging from \$5 to \$500. We used this money to purchase 2000 gallons of diesel fuel for our operational diesel locomotives. With the price of fuel going up every day, we felt it was dollar-wise to purchase the fuel at this time and thanks to the generosity of our members we were able to do so. Those contributing in December and January were:

Mark Acuna	Mary McCullough
James Atkins	Rick Merle
Charles Bach	Tom Messer
R. J. Beall	Mayers Family
Ted Benson	Stanley Miller
Dallas Berry	John Noonan
Dennis Gilkey	Stanley Thompson
Charles Givens	Leland Thwaites
Steve Habeck	Steven Unger
Diane Hale	Robert Wilson
Robert Hamilton	Thomas Yagerhofer
Jim Harper	Drew Blanchar

John Bradley	Renee McComb
Richard Canino	Casey McCord
George Comer	Jack Palmer
John Cone	William Redding
Joel Cox	Larry Richards
Donald Davella	Gary Richardson
William Decker	Don Richmond
Robert Dobbins	Robert Rohwer
William Garner	Ralph Ross
James Gridley	Richard Rowe
Lyn Held	Richard Simonsen
Josiah Jenkins	Eric Simpson
Patrick Kennedy	David Tateosian
Fred Klyver	
Michael Knight	
Robert La Force	
Peter Langdon	
Thomas Lawler	
Jeff Lyons	

WP LIVES