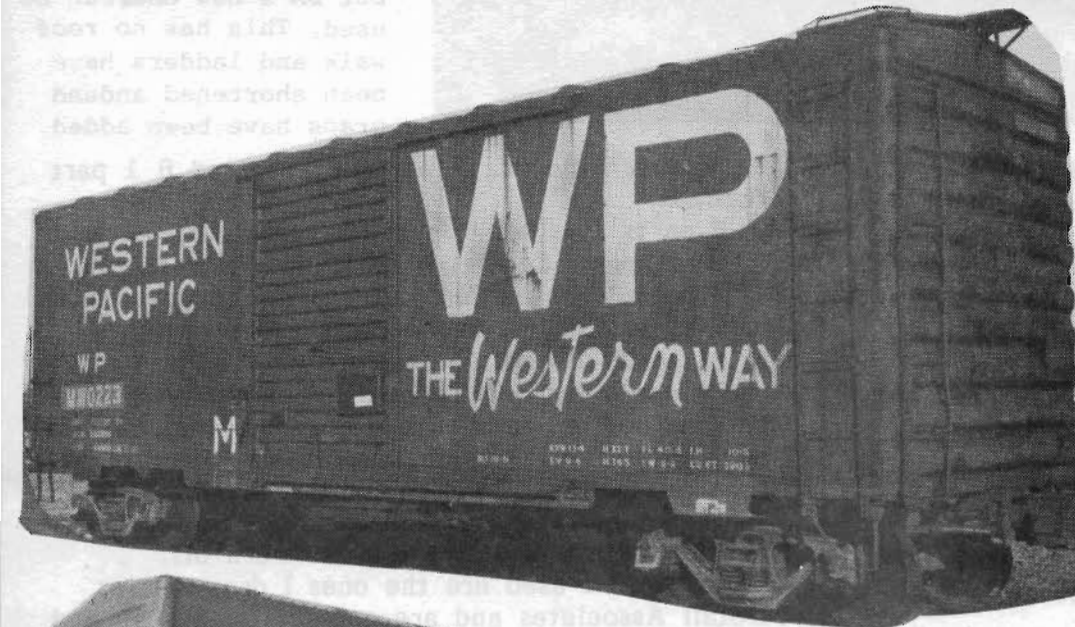
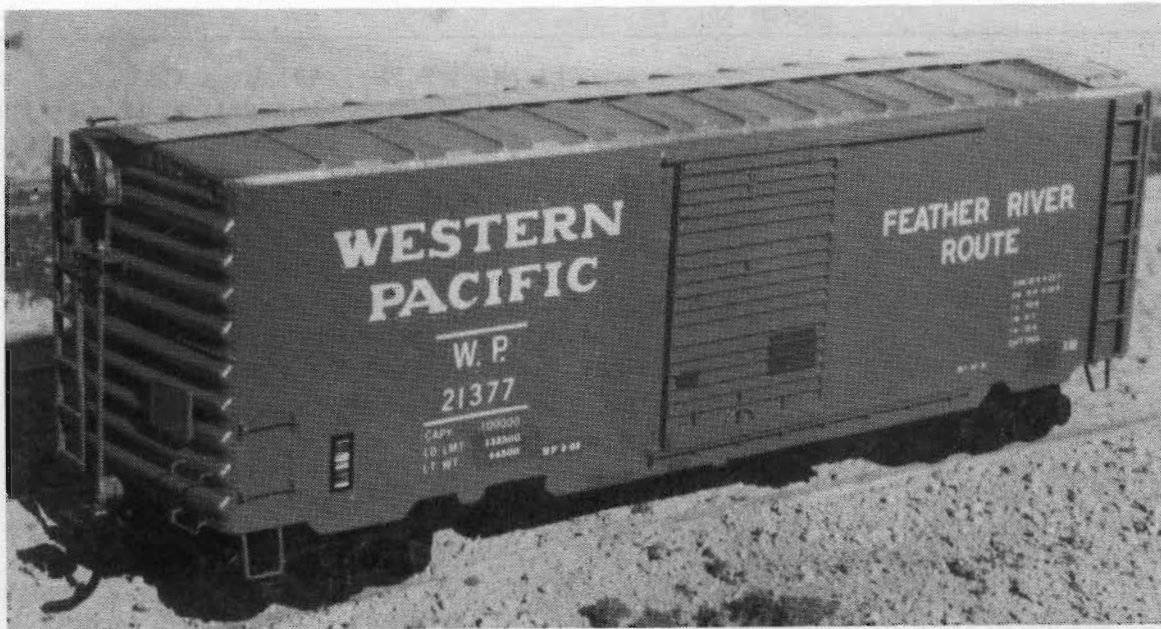


MODELING WP PS-1 40' BOX CARS.....

When McKean Models came out with the Master Series 40' PS-1 box cars there was finally a close car to WP's. Athearns 40' box car has dreadnaught ends and riveted sides. McKean's are welded sides and PS-1 type ends and with out roof walk holes and cast on ladders which make converting the cars a lot easier. Since McKean's car has a 8' door and WP a 7' I filled in the door opening with .020 styrene cut to fit. Fill in any gaps with filler putty, sand smooth with 320 paper and polish with 500 grit. Which out for the weld lines as they are close to the doors. Trim the door guides down to 7' sizes and sand smooth, cut off the door stop and reglue it closer to the door. The closest door is Athearn part #55201 which is for the Railbox box cars, cut down to 7 scale feet by cutting from each side. Put a scale 1x4 along the trimmed edges to finish off the doors. Note, the tack boards when the cars were delivered are high and centered and when the cars were repainted the boards were moved to the lower position. Most all nonre-painted cars (silver scheme) have the boards in the high position.

WP 22014 has a simplified paint scheme used by WP in the late 70's. Ladders cut short and no roof walk this car is in flour service with a "IMRON" clear inside finish. WP 0239/21255 is in MofW service and 0223/20834 has the scroll "THE WESTERN WAY" which not many 40's got. 37007 is a rebilt 50' from a 40'. WPMW 0242 has the block "THE WESTERN WAY" and is ex22023 which is ex21337.....





WP 21377, lettered with DA set 9003 painted blend #5 note the ACI plate and the data has been changed using white lettering from Microscale set 87-0001. WP 22005 is DA set 9004 which is complete for this series. Note the wheel dots, no roof-walk warning and consolidated stencil. I used Tuttle stirrups but DA's new ones can be used. This has no roof walk and ladders have been shortened and end graps have been added.

I used a #11 X-ACTO blade with the tip cut back to scarp the plastic away between the ribs and glued a new board in the high position. I used McKean's ladders, but found that the brake wheel and related equipment to be a little oversize. Cal-Scales Ajax brake wheel set is correct for WP cars and used it in place of McKean's. Detail Associates #6211 brake platform, #6909 bracket type grab irons, #2202 grab irons(ends), #2504, 2505 3/4, 1" scale brass wire, and #6205, #6203 running boards replaced McKean's parts. Trim the side sills to match the measurements shown and when installing the underside brake equipment turn the air reservoir length wise not cross wise as McKean has it.

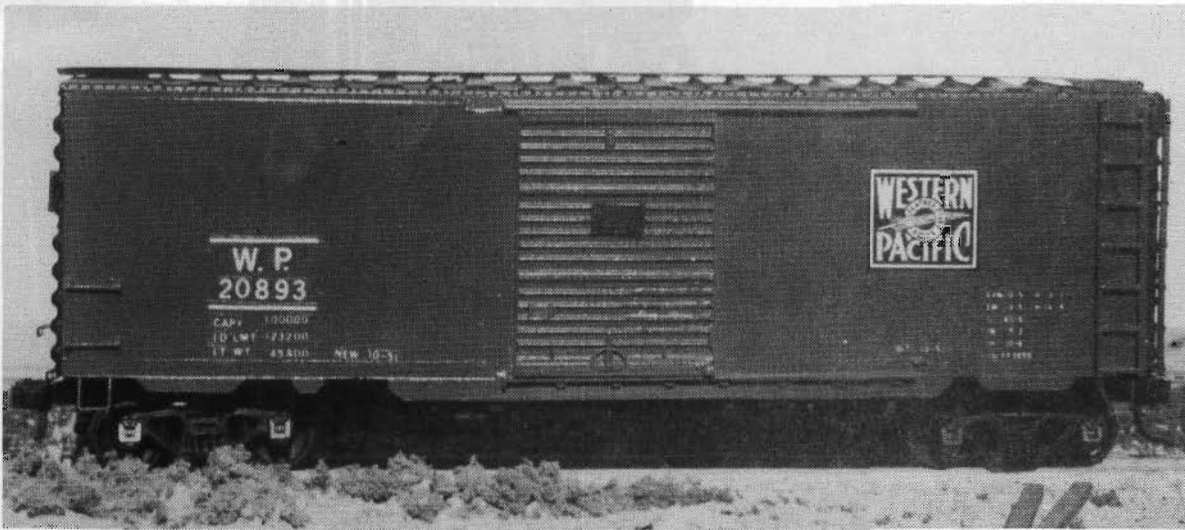
Painting the cars....I used Floquil paints and by using paint chips from the cars at the museum and a paint control panel from WP, I have made up the following blends;

WP box car red (new) 10 parts Zinc Chromate primer and 1 part Roof Brown

And as it weathers WP box car red can be any of the following, they are a guide, mix them up and see how they match the photo or slide you have. Color matching is based on light and in different lighting conditions can be very different.

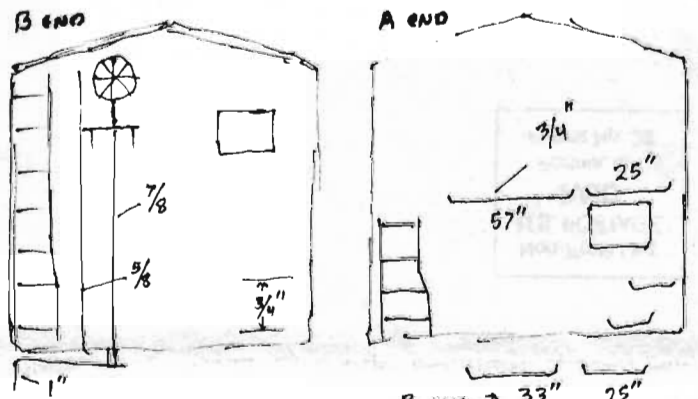
1. 5 parts zinc pr., 1 part box car red & 1 part rust.....
2. 5 parts zinc Pr., 1 part box car red
3. equal parts DGH red, box car red or tuscan
4. 5 parts caboose red and 2 parts box car red
5. 5 parts zinc pr. and 5 parts rail brown
6. etc. etc. I work these combos around to make every car a little different. WP painted the later cars, a roof brown with white added, when repainted and roof walks removed. The simplified paint scheme is close to Floquil box car red. The roofs are painted 1/2 old silver and 1/2 reefer gray' as most all roofs have the paint worn off. The Decals I used are the ones I drew up for Detail Associates and are correct for WP 40 and 50 foot cars in WP's different paint schemes. They are due to be released soon and then the block "THE WESTERN WAY" will be available for the 1st time along with correct "RETURN TO" blocks and DF-2, Cargo Control etc markings.... Member Jim Harper of High Sierra Models, gives this advise on doing decals...and it works the best, Even using Glaze in the paint mix you need to over spray with High Gloss and after the decals are on and no bubbles after using Solvaset, go over the decals before weathering with a coat of High Gloss again and the decal film will be gone.....



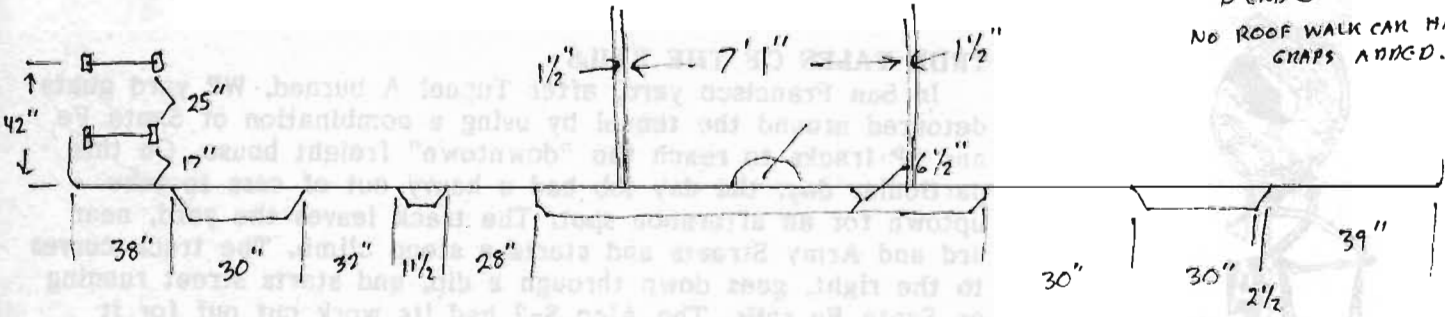


WP 20893, is lettered with DA set 9002 which has all the correct data for new WP cars in 40 and 50 feet. These cars came to the WP with black roofs and ends sides WP box car red. Many were never repainted and worked over 30 years with the same paint.

As the photo's of the models show I have not weathered the cars yet, I use oil paints, Polly S weathering color kit paints and then over spray with Floquil weathering colors..... This is the first time modeling has been in the SHEET AND I hope it rounds out an article on a specific series of WP equipment. Since WP used many differant paint schemes on their box cars that will be a up coming article with drawings.....



NO ROOF WALK CAR HAS END GRAPS ADDED....



WP 21058 is lettered with DA set 9001 which has all the correct data for 40 and 50 foot cars. Painted plain box car red with cut down ladders no roof walk and Microscale U-1 wheel dots, consolidated stencil and yellow no roof walk warning label. This scheme was used by WP as a cost saving as it was very simple.

