

A LARGE PART OF THE MEMBERS THAT MADE UP THE TRAIN CREWS FOR RAILROAD DAYS.....

electrician Dick Trost installed a jumper. Operations lasted until 5 PM with some trips leaving with a full load pf passengers. Sunday train service started after the speeder time trails were completed (story elsewhere), and ran until 4 PM.

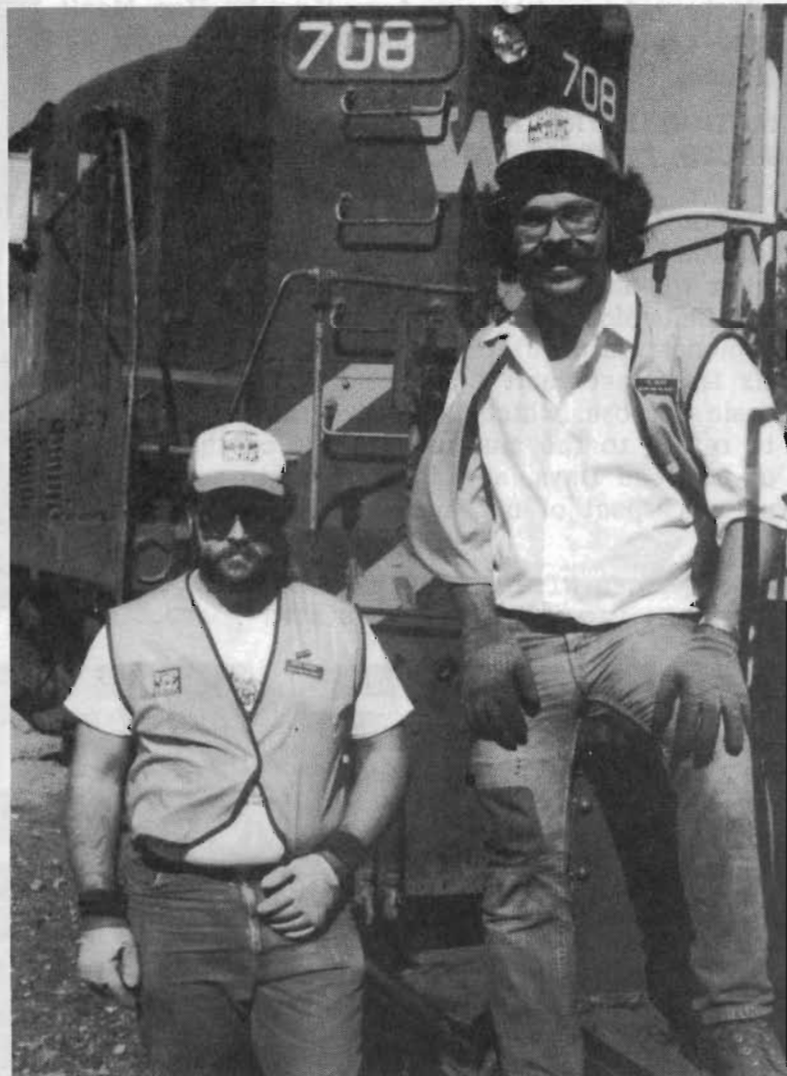


Mary Ryczkowski nearly single handedly manned the ticket booth, assisted by Dennis Clemens. Charlene Marvin and Diane Wollesen sold soft drinks, coffee, ice tea and donuts from the kitchen. The Calpine Elks sold hamburgers, Soccer boosters sold snow cones and the UP junior Old Timers sold hot dogs, all helping to make the museum the place to be on Railroad Days. We thank all who helped make the event a success..

RAFFLE

Through the generosity of Don Miller, two over-night Bed & Breakfast accomodations at White Sulphur Springs Ranch near Clio were donated for us to sell to benefit the Society. The tickets sold were far short of expectations mainly due to other groups selling raffle tickets at the same time.

The winners were Donna Tibbedaux of Portola and Mary Jane Stickney of Quincy.....



THE MEN IN CHARGE....STEVE HABECK AND VIC NEVES FRRS CONDUCTORS....and good ones too.....

MEMBERS OF THE WOLLESEN FAMILY THAT HANDLED THE CROWD CONTROL AT THE BOARDING POINTS AND PASS. ASSISTANCE (our passenger porters.....)