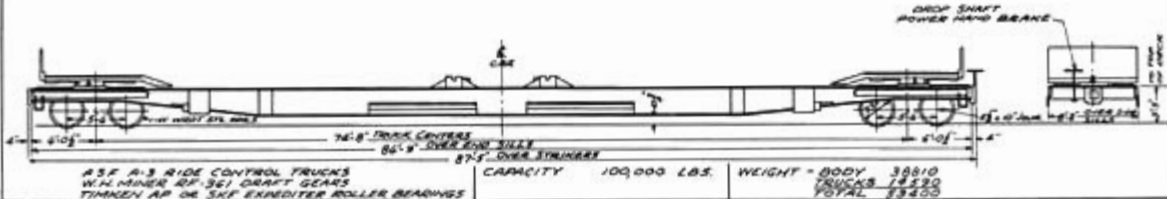


MARK III FLEXI-VAN FLAT CAR, CLASS FC
 BUILT BY GREENVILLE STEEL CAR CO. OCT. 1963
 AFB 146-83

CAR NOS. 1611-1630
 NO. OF CARS 20

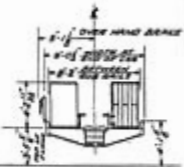
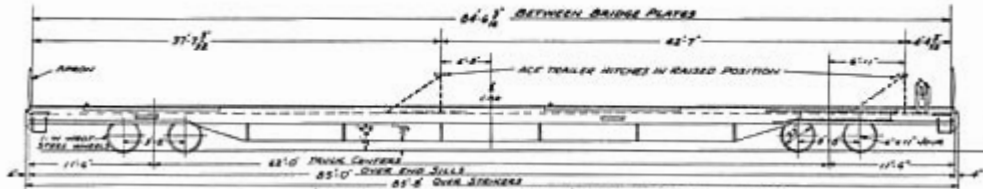


BUILDERS LOT 8485

TRAILER-ON-FLAT CARS CLASS FC
 BUILT BY PULLMAN STANDARD APRIL 1959
 AFE 95-59

CAR NOS. 1701-1725
 NO. OF CARS 25

REVISED
 1-17-62



ACE A-3 RIDE CONTROL TRUCKS
 W/ MINER FR-19 RUBBER DRAFT GEARS
 PINKEN AP ROLLER BEARINGS

CAPACITY 13500 LBS

WEIGHT - BODY 54260
 TRUCKS 16440
 TOTAL 70700 LBS

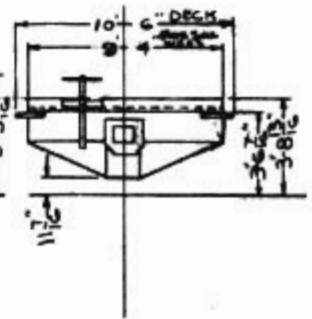
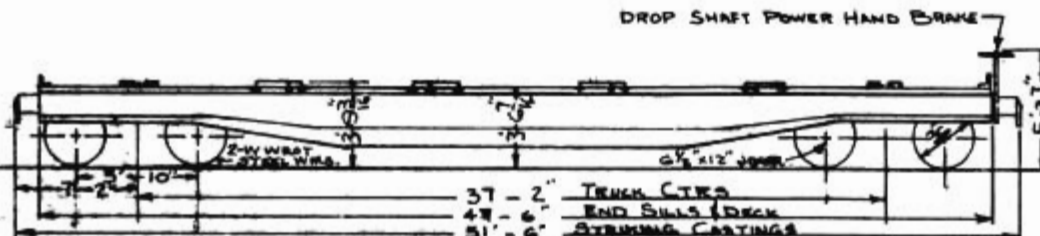
AFE 1749

TITAN MISSILE FLAT CARS CLASS FG
BUILT BY GUNDERSON BROS. ENGR CORP. 1964
AFE-97-64

CAR NOS 1811-1815
NO. OF CARS-5

HYDRA-CUSHION, 20" TRAVEL

REV. 6-28-66
1-16-68



BARBER 3-2-C STABILIZED TRUCKS
WAUGHNEY CUSHION TYPE CG-3 SHOCK SPRING
THICKEN AIR ROLLER BEARINGS
WADCO PAC BRAKES, V-441 COBRA BRAKE SHOES

CAPACITY 195000 LBS

WEIGHT-BODY TRUCKS
TOTAL 66,500

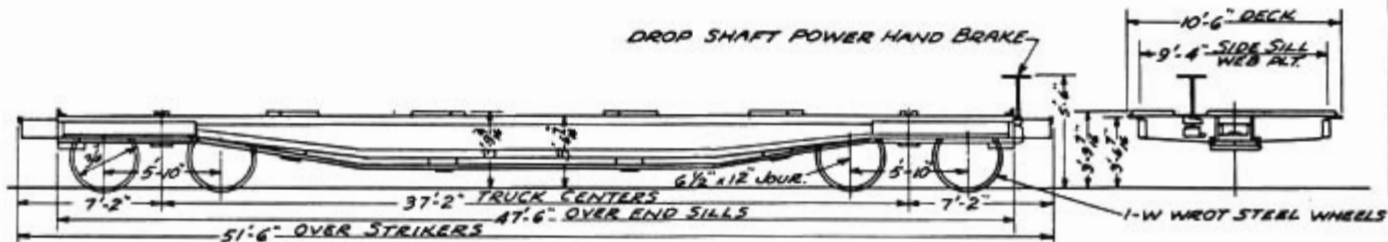
1/18 12-17-64

TITIAN MISSILE FLAT CARS, CLASS FG
 BUILT BY THRALL CAR MFG. CO. MAY 1965
 AFE 14-65

CAR NOS 1816-1818
 NO OF CARS 3

REV. 7-16-68

HYDRA-CUSHION, 20" TRAVEL



WABCO PAC BRAKES, V-141 COBRA BRAKE SHOES
 WAUGHMAT CUSHION TYPE CG-5 DRAFT GEAR
 ASF A-3 RIDE CONTROL TRUCKS
 TIMKEN AP ROLLER BEARINGS

CAPACITY

195,000 LBS.

WEIGHT - BODY 44920
 TRUCKS 20280
 TOTAL 65200

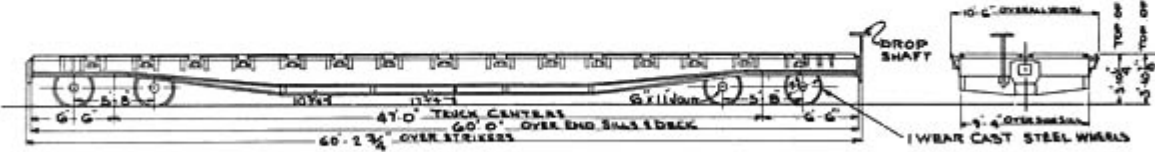
RWC 6-30-66

FLAT CARS CLASS FMS
 BUILT BY GUNDERSON ENGINEERING CORP. 1964
 AFE 135-64

CAR NOS. 1841-1850
 NO. OF CARS - 10
 CAR NO. 2160
 NO. OF CARS - 1

REV. 8-12-66
 1-23-68

CARS EQUIPPED WITH BRANDON LADING DEVICE



NATIONAL CASTING TYPE C-1 TRUCKS
 FREIGHTMASTER CUSHION DRAFT GEAR, 10" TORQUE
 HYATT ROLLER BEARINGS

CAPACITY 140,000 LBS.

WEIGHT-BODY	48 000
" TRUCKS	17 500
TOTAL	65 500

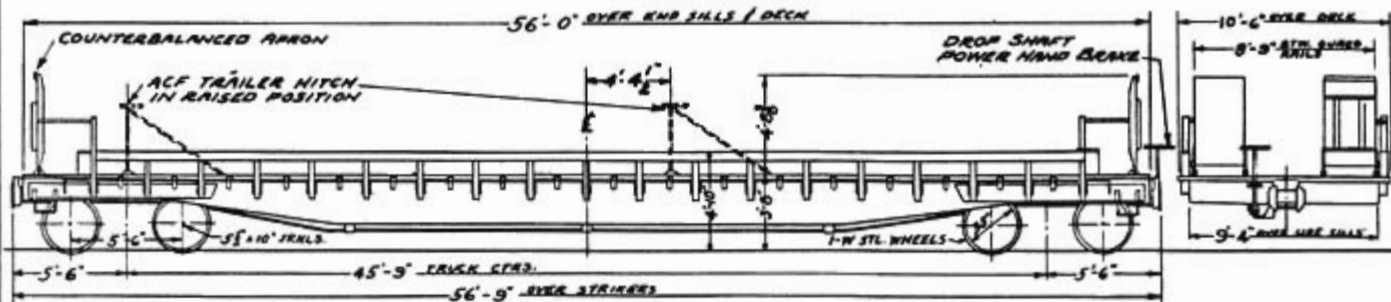
JCB 3/8/68

TRAILER-ON-FLAT CAR, CLASS FC
 CONVERTED FROM 2001-2050 SERIES
 CARS BY W.P.R.R. AFE 113-55

CAR Nos. 1902-1910
 No. OF CARS - 9

CARS 1902, 1906, 1908, 1910 EACH HAVE 2 TRAILER HITCHES-WT. 67600 LBS.
 REMAINDER HAVE 1 TRAILER HITCH EACH-WT. 65100 LBS. APPLIED AFE 45-59

REVISED:
 3-24-60
 3-30-62



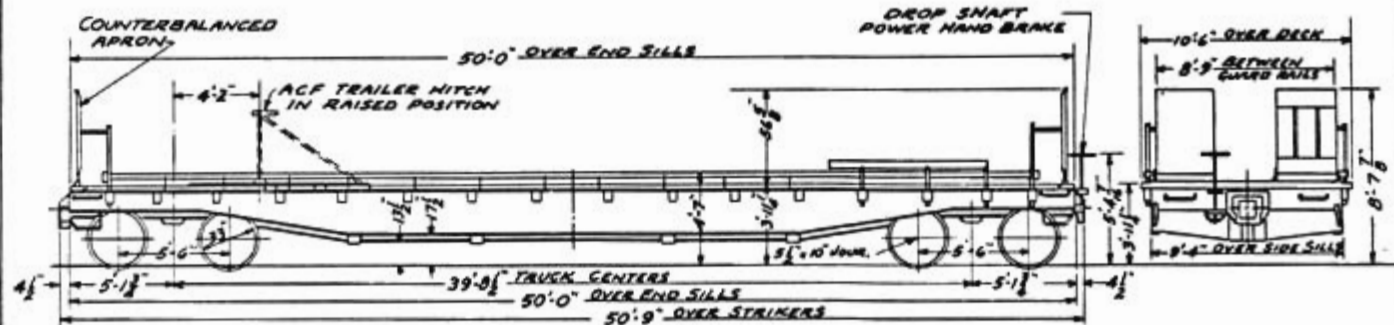
A.S.F. SPRING PLANKLESS TYPE A-3 RIDE CONTROL TRUCK
 WAUGH DRAFT GEAR TYPE #420
 TIMKEN AP ROLLER BEARINGS

CAPACITY — 10000 LBS.
 " — 2-24' TRLRS.
 " — 1-35' TRLRS.

WEIGHT - BODY
 TRUCKS 14590
 TOTAL: SEE ABOVE.

TRAILER-ON-FLAT CAR, CLASS FC
 CONVERTED FROM 2701-2802 SERIES CARS
 BY WPRR AFE 45-59

CAR Nos. 1926-1941
 No. OF CARS 16



ANDREWS TRUCK SIDE FRAMES
 CARDWELL WESTINGHOUSE DRAFT GEAR NY-11-F
 AAR FRICTION BEARINGS

CAPACITY --- 100000 LBS

WEIGHT-BODY
 TRUCKS
 TOTAL 51600 LBS.

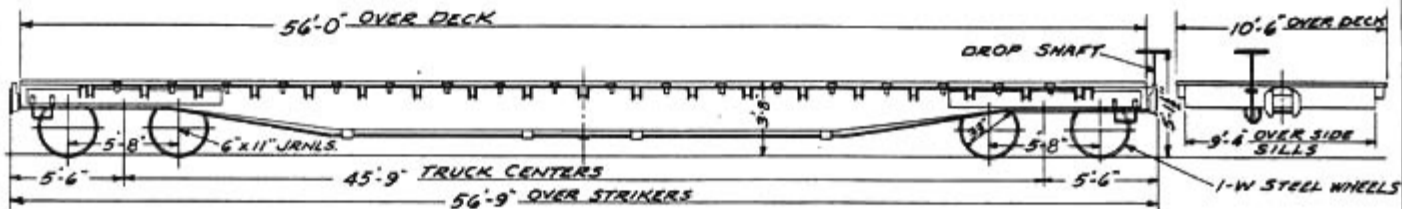
BUILDER'S LOT NR NONE

FLAT CARS, CLASS FM
 BUILT BY THRALL CAR MFG. CO. NOV. 1960
 AFE 77-60

CAR NOS 2101-2150
 NR OF CARS 5

NOTE:

CARS 2101-2140 EQUIPPED WITH TIMKEN AP ROLLER BEARINGS.
 CARS 2141-2150 EQUIPPED WITH SKF ROLLER BEARINGS.



BARBER 5-2-C STABILIZED TRUCKS
 CARDWELL-WEST. TYPE NY-11-F DRAFT GEARS
 ROLLER BEARINGS - SEE NOTE

CAPACITY	140 000 LBS.	WEIGHT - BODY	43660
		TRUCKS	16440
		TOTAL	60100

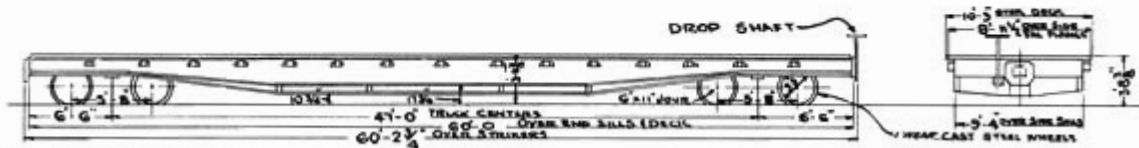
RWC 10-6-60

REV 1-24-68

FLAT CARS
 BUILT BY GUNDERSON ENGINEERING CORP 1964
 AFE 135-64

CAR NOS. 2151-2159
 ORIG. NO. OF CARS 9

2151-2155 CLASS FMS, 2156-2159 CLASS FM



NATIONAL CASTING TYPE C-1 TRUCKS
 FREIGHTMASTER CUSHION DRAFT GEAR, 10" TRAVEL
 HYATT ROLLER BEARINGS

CAPACITY 140,000 LBS.

WEIGHT-BODY	42 200
" TRUCKS	17 500
" TOTAL	59 700

JCS 3-30-65

BUILDER: ORDER NO. 45024

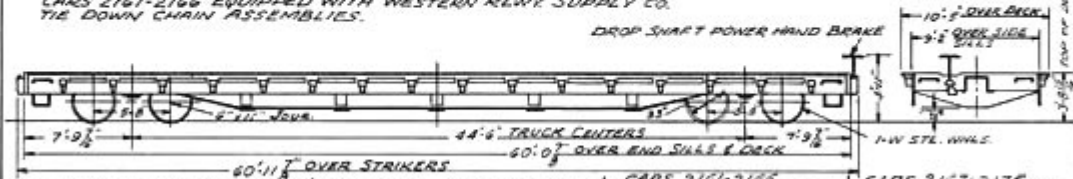
FLAT CARS
 CARS 2161-2166 CLASS FMS
 CARS 2167-2175 CLASS FM
 BUILT BY ST. PAUL FOUNDRY & MFG. CO. 1967
 AFE 72-67

CAR NOS. 2161-2175
 NO. OF CARS 15

EQUIPPED WITH APEX RLWK. PRODUCTS CO.
 MODEL E12-2J HYDRA-BUFF CUSHIONING, 12" TRAVEL

ROLLER BEARINGS: 2161-2170 TIMKEN, 2171-2175 BRENCO
 CARS 2161-2166 EQUIPPED WITH WESTERN RLWK. SUPPLY CO.
 TIE DOWN CHAIN ASSEMBLIES.

DROP SHAFT POWER HAND BRAKE



ASF A-3 RIDE CONTROL TRUCKS
 ROLLER BEARINGS-SEE ABOVE

CAPACITY 160,000 LBS.

CARS 2161-2166
 WEIGHT-BODY 42260
 TRUCKS 16440
 TOTAL 58700

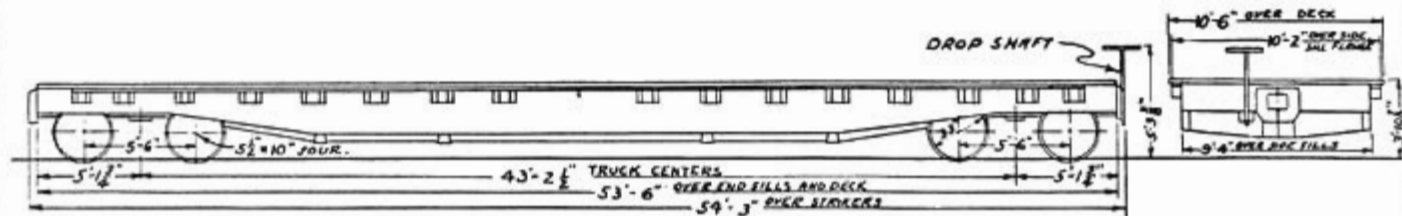
CARS 2167-2175
 WEIGHT-BODY 41260
 TRUCKS 16440
 TOTAL 57700

RWC 7-18-67

FLAT CARS, CLASS FM

CAR Nos. 2201-2224
ORIG. No. OF CARS - 24CARS 2211, 2216, 2221, 2224 EQUIPPED FOR HANDLING
CHEVROLET K.D. FRAMES AFE 65-63CARS 2212, 2219, 2220 EQUIPPED FOR HANDLING CHEVROLET
HEAVY DUTY FRAME BARS & HAD HYDRA-BUFF APPLIED AFE 66-63
DISTANCE OVER STRIKERS 58'-5½", 12" TRAVEL.

NOTE:

THESE CARS CONVERTED FROM
FLAT CARS IN 2401-2700 SERIES.REVISED:
3-30-60
11-9-61
4-30-63
1-24-68

SCULLIN STEEL Co. SPRING PLANKLESS SIDE FRAME TRUCKS	CAPACITY - 100000 LBS.	WEIGHT - BODY 37410
MINER DRAFT GEAR CLASS A-22-XB		TRUCKS 14590
AAR FRICTION BEARINGS		TOTAL 52000 LBS.

W.P. SPECIF. F-1-1937
BUILDERS ORDER No. 52400

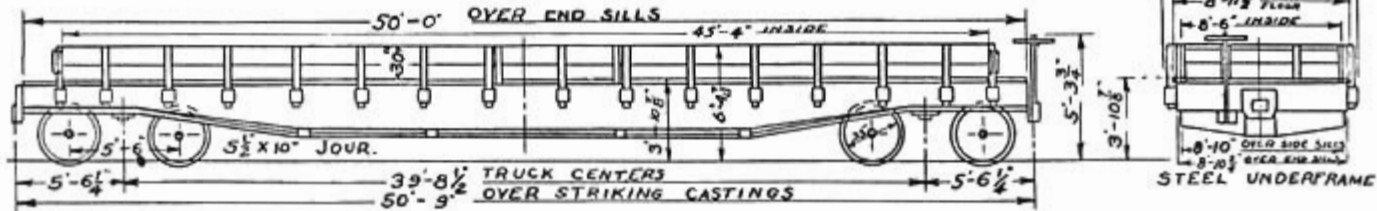
STEEL FLAT CAR, CLASS FMS

CAR Nos. 2351-2400
ORIG. No. OF CARS-50

BUILT BY PACIFIC CAR & FDY. CO. MAR. 1937
AFE 71-37

NOTE:

ALL CARS HAVE SIDE BOARDS REMOVED. AFE 22B-55, 17-67



A.S.F. SPRING PLANKLESS SIDE FRAME TRUCKS
CARDWELL WESTINGHOUSE NY-11-E DRAFT GEAR
AAR FRICTION BEARINGS

CAPACITY 10,000 LBS.
CUBIC CAR 984 CU. FT.

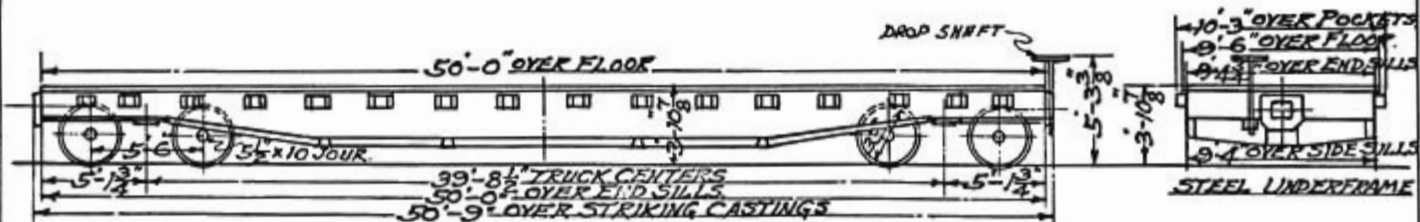
WEIGHT-BODY 30510
TRUCKS 14590
TOTAL 42500 LBS.

W.P. SPECIF. F-1-1941
BUILDERS ORDER NO 9723

STEEL FLAT CAR, CLASS FM
BUILT BY MT. VERNON CAR MFG. CO.
NOV. - DEC. 1942
AFE 232-42

CAR NOS 2401-2700
ORIG. NO. OF CARS 300

REVISED:
7-13-57
3-29-60
2-5-64
1-24-66



BARBER S-2 TRUCKS
MINER DRAFT GEAR CLASS A-22-XB
AAR FRICTION BEARINGS

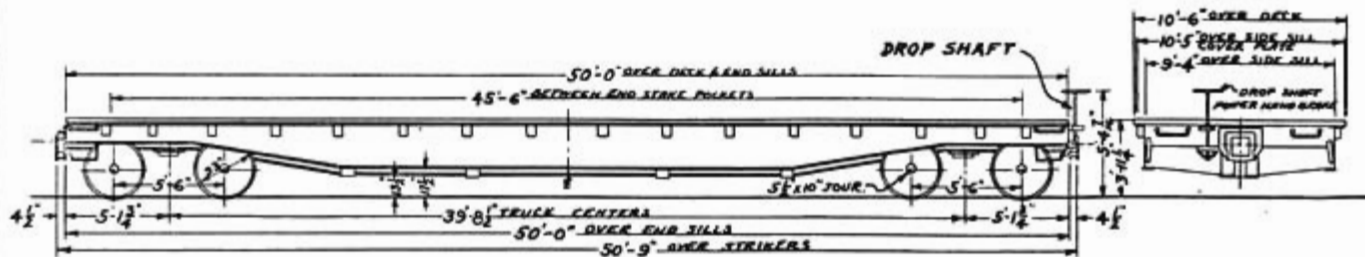
CAPACITY --- 100000 LBS WEIGHT-BODY 29810
TRUCKS 14590
TOTAL 44400 LBS

R.J.D. 8-16-43.

FLAT CARS, CLASS FM
BUILT BY W.P.R.R. NOV. - DEC. 1953
RFE 157-53

CAR Nos. 2701 - 2802
ORIG No. CARS - 102

REVISED:
3-28-60



ANDREWS TRUCK SIDE FRAMES
CARDWELL-WESTINGHOUSE TYPE NY-II-F DRAFT GEAR
AAR FRICTION BEARINGS

CAPACITY	100,000 LBS.	WEIGHT - BODY
		TRUCKS
		TOTAL 45,900 LBS.

KOC 8-9-53

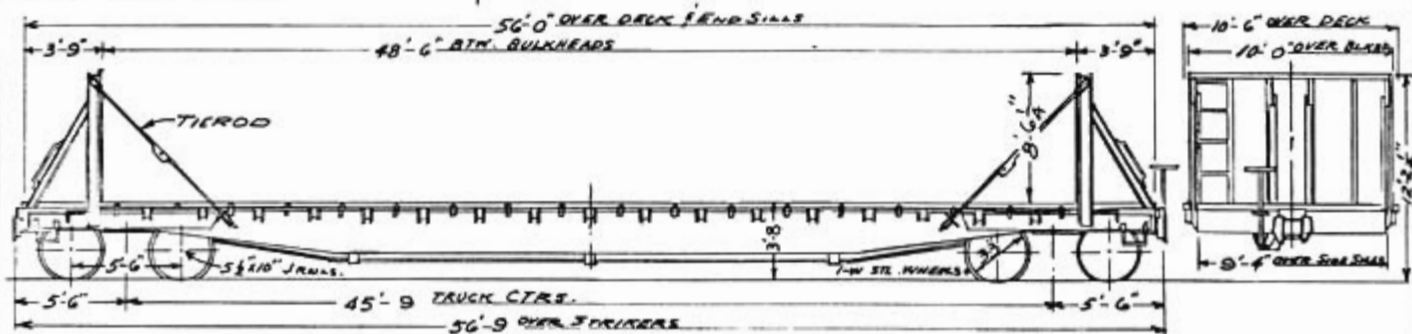
NOTE

2820-2823 EQUIPPED WITH NATIONAL
TYPE MF-400 DRAFT GEAR
2824-2825 EQUIPPED WITH WAUGH
TYPE WM-DC-5 DRAFT GEAR

BULKHEAD FLAT CAR, CLASS FMS

CAR Nos. 2820-2825
NO OF CARS - 6

CONVERTED FROM THE FOLLOWING:
2820-2823 FROM 2051-2075 AFE 127-63
2824-2825 FROM 2001-2050 " "

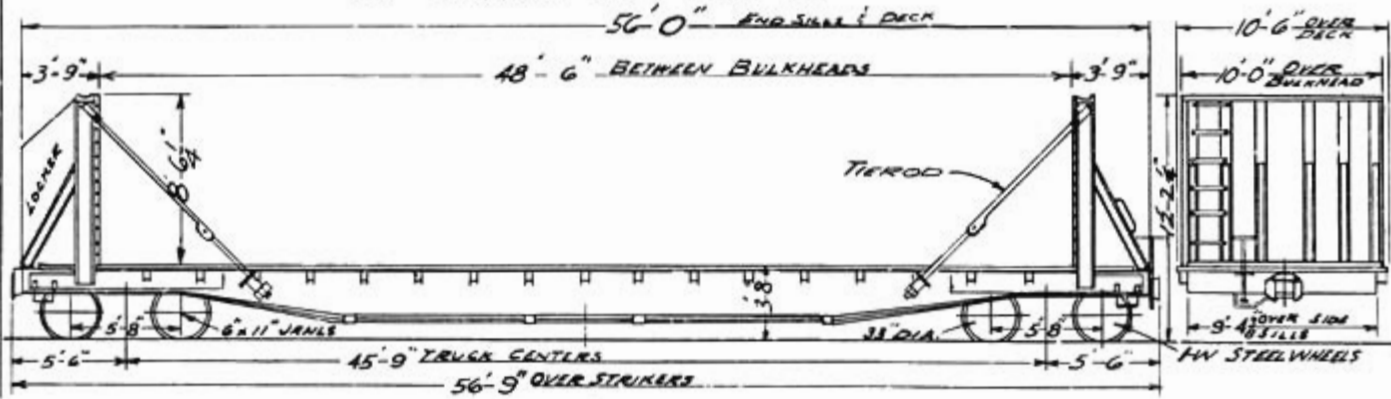


A.S.F. TYPE A-3 RIDE CONTROL TRUCK
DRAFT GEAR SEE NOTE ABOVE
TIMKEN AP ROLLER BRGS

CAPACITY - - - 100,000 LBS.	WEIGHT - BODY TRUCKS
	TOTAL - 60,500 LBS.

BULKHEAD FLAT CARS CLASS FMS CAR NOS 2826-2840
 CONVERTED FROM 2101-2150 SERIES FLAT CARS NO OF CARS 15
 BY W.P.R.R. AFE 125-63

REV. 1-19-68



BARBER 5-2-C STABILIZED TRUCKS
 CARDWELL-WEST TYPE NY-11-F DRAFT GEARS
 ROLLER BEARINGS-TIMKEN OR SKF
 JCS 1-31-63

CAPACITY... 140,000 LBS.

WEIGHT-BODY	50260
TRUCKS	16440
TOTAL	66700

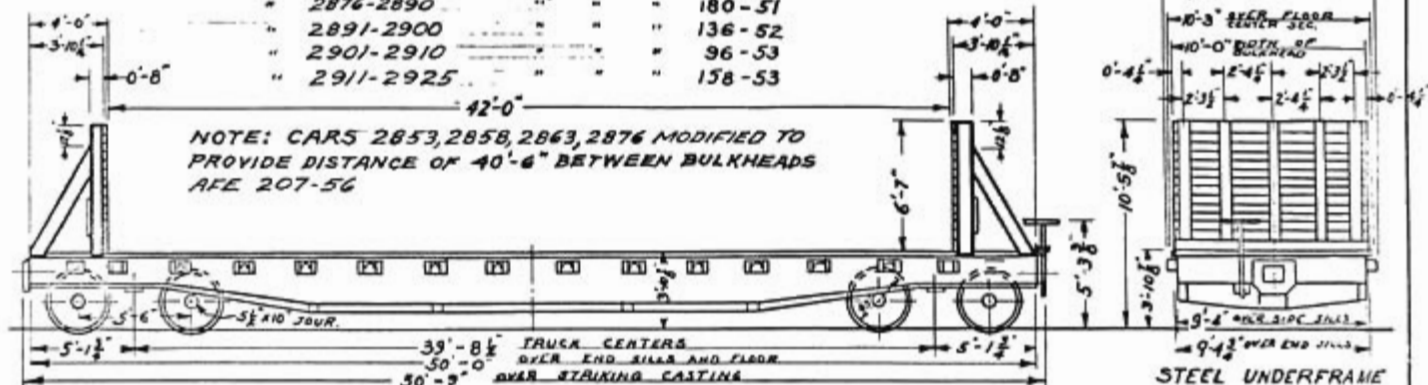
BULKHEAD FLAT CARS, CLASS FMS
 CONVERTED FROM FLAT SERIES 2401-2700
 BY W.P.R.R.

CAR Nos. 2851-2925
 ORIG. NO. CARS - 75

CARS 2851-2875 CONVERTED ON A.F.E. 72-50

" 2876-2890	" " "	180-51
" 2891-2900	" " "	136-52
" 2901-2910	" " "	96-53
" 2911-2925	" " "	158-53

NOTE: CARS 2853, 2858, 2863, 2876 MODIFIED TO
 PROVIDE DISTANCE OF 40'-6" BETWEEN BULKHEADS
 AFE 207-56



BARBER S-2 TRUCKS
 MINER DRAFT GEAR CLASS A-22-XB
 AAR FRICTION BEARINGS

CAPACITY - - - 100,000 LBS.

WEIGHT - BODY 33410
 TRUCKS 14590
 TOTAL - 48,000 LBS

REVISED:
 7-10-53
 10-22-53
 4-7-55
 3-29-60
 1-24-68

BULKHEAD FLAT CARS, CLASS FMS

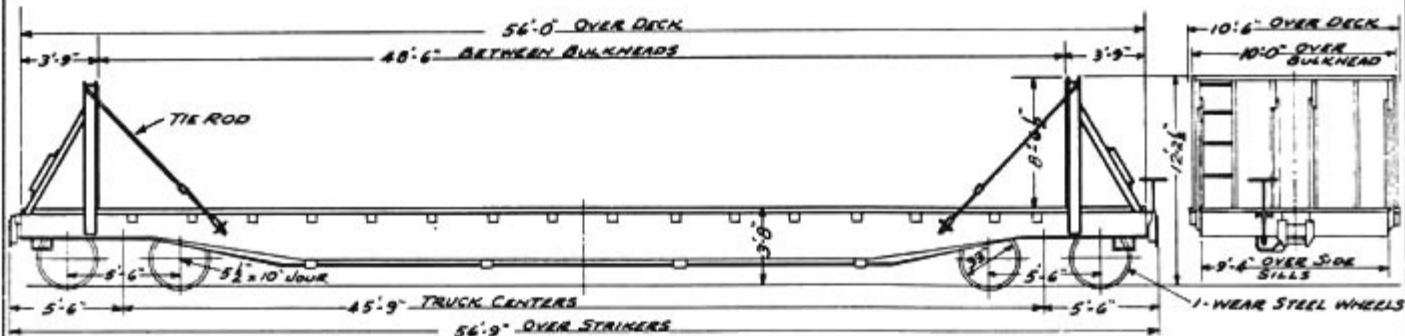
CAR NOS. 2931-2950

CAR NO. 2990

NO. OF CARS 21

CONVERTED FROM THE FOLLOWING:
 2931-2950 FROM 2051-2075 AFE 127-58
 2990 " " " AFE 102-59

NOTE: - ORIG. SERIES 2051-2075 BUILT APRIL 1957.



ASF A-3 RIDE CONTROL TRUCKS
 N.M. & S.C. CO. MF-400 RUBBER DRAFT GEARS
 TIMKEN AP ROLLER BEARINGS

CAPACITY. --- 100000 LBS.	WEIGHT - BODY 43210
	TRUCKS 14590
	TOTAL: 57800 LBS.

BULKHEAD FLAT CAR, CLASS FMS

CAR Nos. 2951-2989

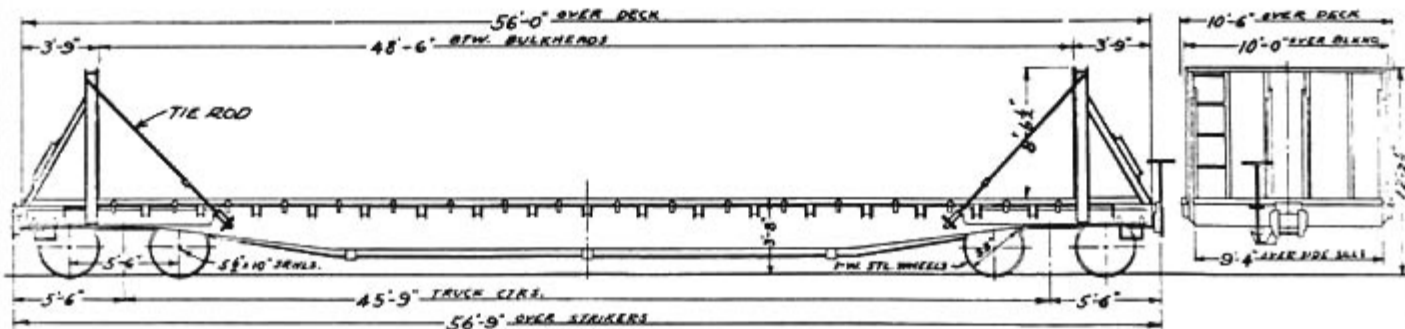
NO. OF CARS - 39

CONVERTED FROM THE FOLLOWING:

2951-2980 FROM 2001-2050 AFE 210-55

2981-2989 " " " AFE 102-59

NOTE: - ORIG. SERIES 2001-2050 BUILT AUG 1955

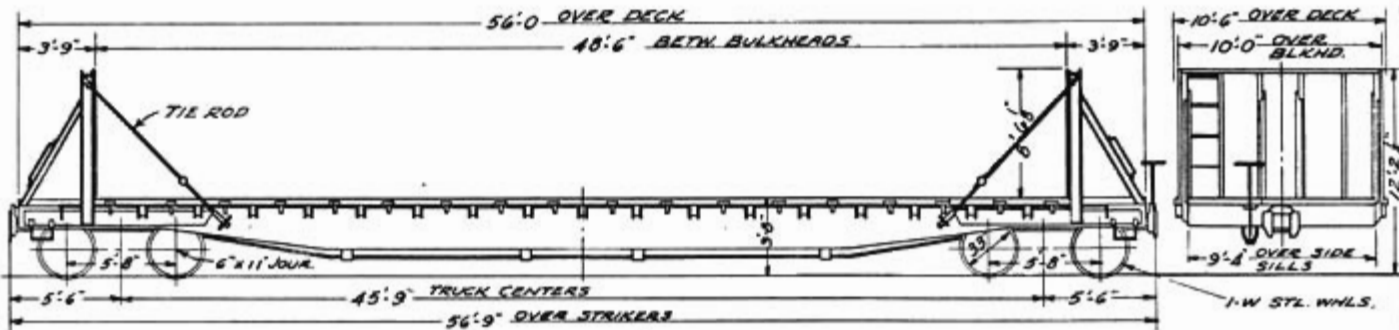
REVISED:
3-25-60
4-2-62
1-19-68

BULKHEAD FLAT CAR, CLASS FMS
 CONVERTED FROM 2101-2150 SERIES FLAT CARS
 BY W.P.R.R. AFE 60-61, 67-62, 128-66

CAR NOS 2926-2930
 CAR NOS 2991-3000
 CAR NOS 2841-2850
 CAR NOS 2817-2819

NO OF CARS 28

REV. 1-31-64
 1-18-68



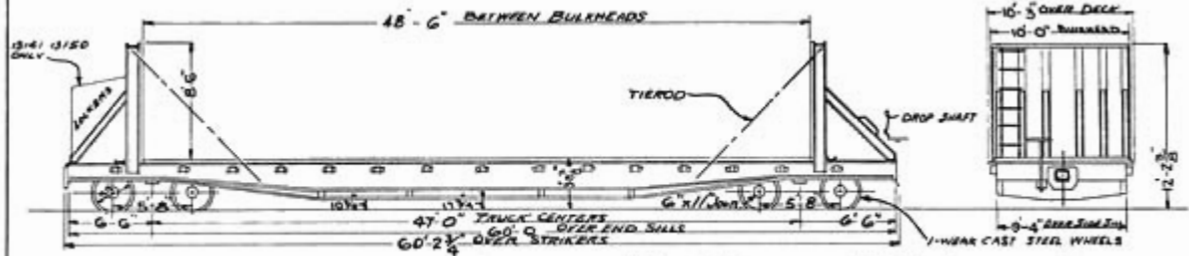
BARBER S-2-C STABILIZED TRUCKS
 CARDWELL-WEST. TYPE NY-11-F DRAFT GEARS
 TIMKEN OR SKF ROLLER BEARINGS

CAPACITY	140,000 LBS	WEIGHT-BODY	48,460
		TRUCKS	16,440
		TOTAL	64,900

RWC 11-20-61

FLAT CARS CLASS FMS
 BUILT BY GUNDERSON ENGINEERING CORP 1964
 AFE 135-G4

CAR NOS: 13101-13150
 NO OF CARS- 50



NATIONAL CASTING TYPE C-1 TRUCKS
 FREIGHTMASTER CUSHION DRAFT GEAR
 HYATT ROLLER BEARINGS

CAPACITY 140,000 LBS

WEIGHT-BODY	50,100
TRUCKS	17,500
TOTAL	67,600

UIC 8-50-64