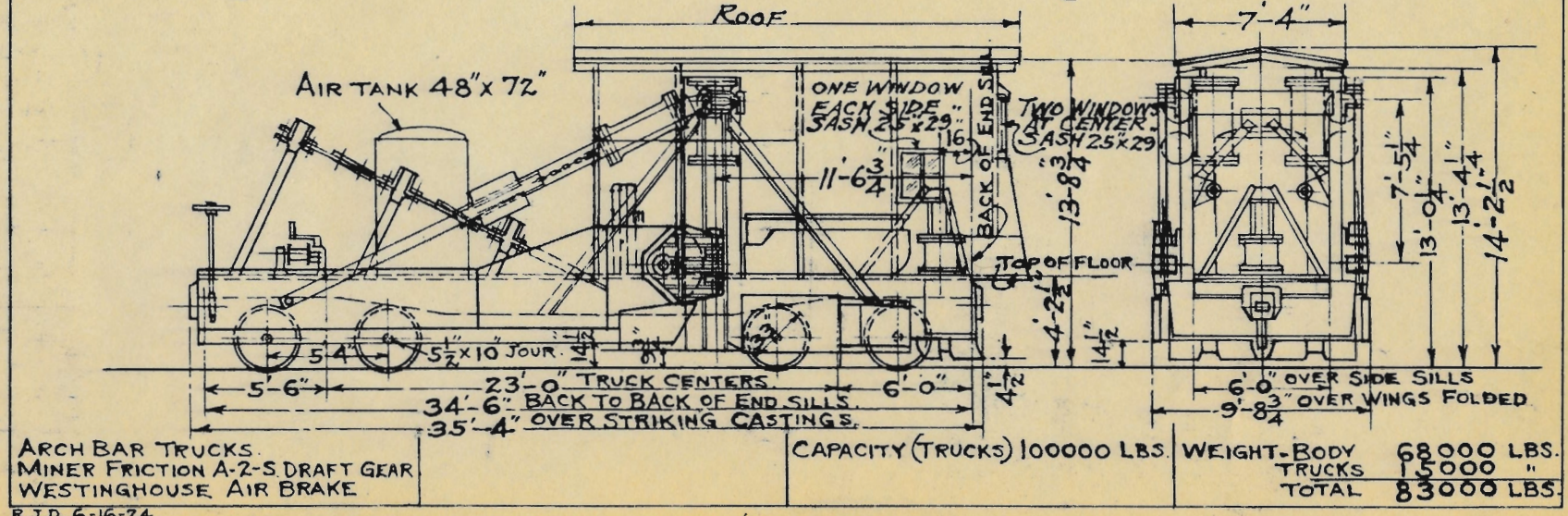


JORDAN SPREADER-DITCHER.  
BUILT BY O. F. JORDAN CO.  
EAST CHICAGO, IND.

1924	No. 9	SERIAL NO.	534
1927	" 10	" "	668
"	" 11	" "	669
"	" 12	" "	671

REV.  
3-1-28.



LOCOMOTIVE CRANES  
BUILT BY MEMYLER MFG. CO.

CRANE NO.	FUEL	MEMYLER SERIAL NO.
29	COAL	1537
32	COAL	1607
33	COAL	1613

140-2" TUBES IN BOILER	NO-64 ON CRANE	NO-29	A	B
135-2"	" " " "	NO-71	50 3/4"	60"
135-2"	" " " "	NO-73	50"	59 1/2"
135-2"	" " " "	NO-73	50"	60"

REV.  
3-3-24.  
1-15-26.  
5-19-30.  
11-29-31

