



# Guided Tour of H/A Web Pages at WPLives.org

Historical/Archive  
Department

Carrying on a tradition over  
100 years ago...



The Western Pacific Railroad was not the largest of the Modern Class One railroads. It wasn't formed until 1909. However, operating in the shadow of giants like the Southern Pacific, Santa Fe and the Union Pacific, the relatively young WP had to work that much harder to survive. Thanks to the tenacious spirit and dedication of its employees, the WP rolled on in the face of occasional



Presented by Kerry Cochran, H/A Department Manager

Created by Paul Finnegan, FRRS Webmaster

WP Historic Convention – April 2023

Historical/Archive Department

# Historical/Archive Department Resources

- H/A pages on the society website have greatly expanded over the past four years.
- Focus has been to present information about the WP that was previously unavailable online.
  - FRRS Publications
  - WP Publications
  - Material from FRRS Archives
  - History of PRM, WPRM and the FRRS
- H/A Home page on WPLives.org:
  - Desktop Computer: it is on the “Museum” pull-down menu
  - Mobile Devices: red “Hamburger Menu” → Full Website Menu → Museum



# Finding the H/A Home Page on a Desktop

**WESTERN PACIFIC RAILROAD MUSEUM at PORTOLA**  
Experience "Hands On" History

**Museum Admission:**  
Adults 19 - 64 \$10.00  
Youth 5 - 18 \$5.00  
Children 4 and under free  
65+ / Active Military \$8.00  
Family Pass \* \$25.00  
\* - Family Pass: 2 Adults and any related children 13 and under.

**Museum Hours:**  
Museum is closed for the winter except for special events.  
We will open again Thursday April 14, 2022.

**Museum Location:**  
700 Western Pacific Way  
Near Old Town Portola  
Portola, California  
96122-8636  
530-832-4131  
www.wplives.org

**Latest Museum News Update:**  
Last updated Saturday  
March 12, 2022  
[Latest Museum News Revision History](#)

**Museum is closed for the winter**  
We will open again Thursday  
April 14<sup>th</sup>, 2022.

Next Board of Director's Meeting  
April 9<sup>th</sup>  
1:00 PM WPRM Meeting Room – Portola

March Agenda, Reports & Financials,  
February Agenda, Reports & Financials,  
January Agenda, Reports, Financials &  
Preliminary Minutes,  
December Agenda, Reports, Financials &  
Approved Minutes,  
and material for November 2021 and  
previous meeting material  
[HERE!](#)

Video #2 from WP 165 Fire Up 11/13/21  
[Watch it HERE!](#)

From the archives...  
Unusual photo of Keddie Wye  
Randall D. Franks  
Posted 3/1/22  
[See it HERE!](#)

For the modeler...  
[Aerial view of Orville's Yard](#)

**Visit Us** **About Us** **News** **Museum** **Members**

[Search the wplives](#)

ENHANCED BY Google

Follow us Online:

**Museum is closed**  
We will open again Thursday April 14<sup>th</sup>, 2022.

The Feather River Rail Society is pleased to announce the  
**2022 Western Pacific Historical Convention**  
"Celebrating the Western Pacific Family"  
May 12-15, 2022 - Thursday, Friday, Saturday  
PLUS special Sunday events at the Western Pacific Railroad Museum - Portola

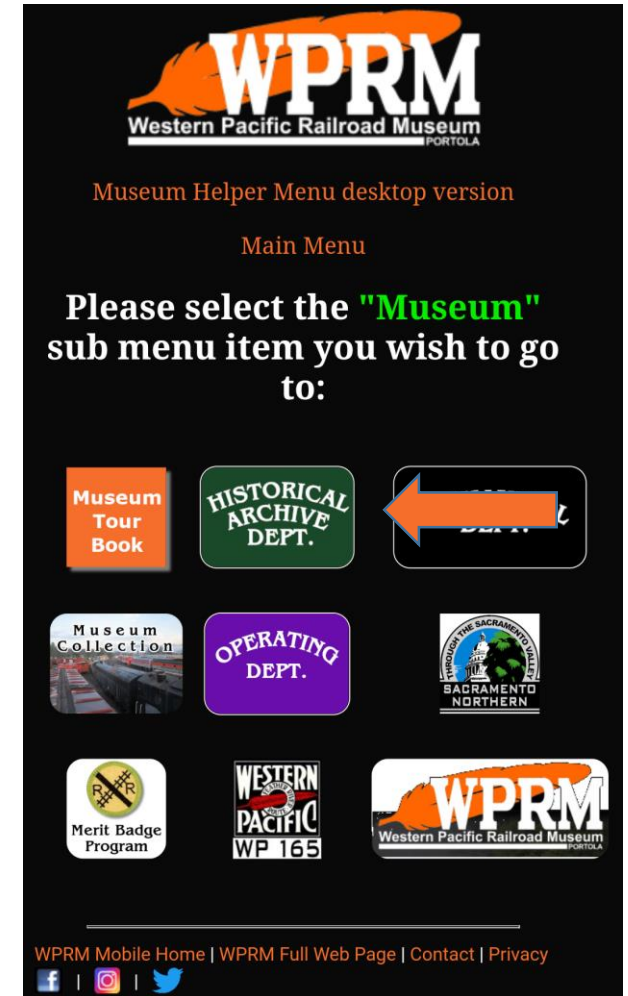
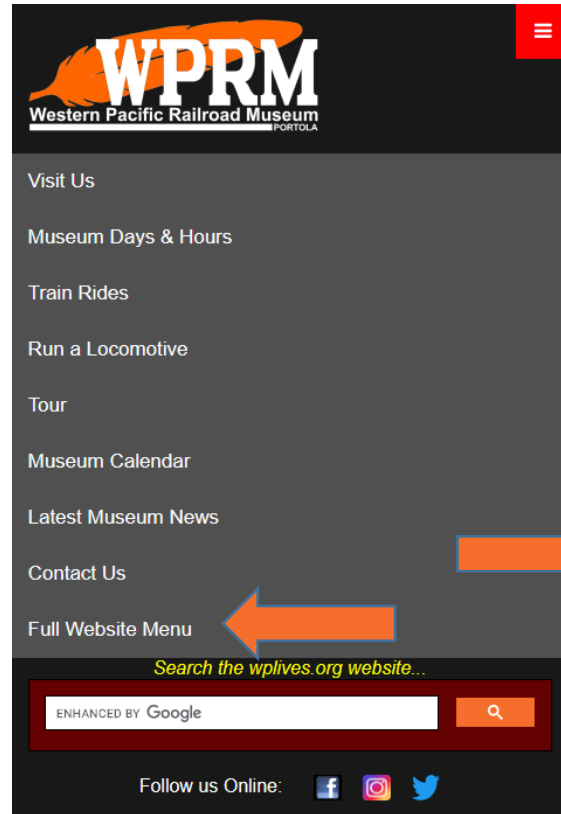
[More Information HERE!](#)

[Special Sunday Events Information HERE!](#)

Museum Tour Book  
Historical/Archive Department  
Mechanical Department  
Museum Rolling Stock  
Operating Department  
Sacramento Northern  
Scouting Program  
Western Pacific Steam



# Finding the H/A Home Page on a Mobile Device



[www.WPLives.org](http://www.WPLives.org)

# Archive Collections (new June 5, 2021)

- FRRS Historical/Archive Department Collections

- Photos and scans of documents & drawings

- Many of the photos have captions
    - WIP (Work In Progress) to add more captions
    - WIP to add more items to existing collections and more collections

GP7 WP 704		PICT6567
GP7 WP 705	Perlman Green	PICT6569
GP7 WP 705	Perlman Green	PICT6570
GP7 WP 705	Perlman Green	PICT6572
GP7 WP 705	Perlman Green	PICT6574
GP7 WP 705	Silver and Orange	PICT6568
GP7 WP 705	Silver and Orange	PICT6571
GP7 WP 705	Silver and Orange	PICT6573
GP7 WP 708	Perlman Green	PICT6575

- Two indices to assist in finding material

- **Index of all captioned photos in our H/A collections:** It groups photos by predefined tokens. E.g. if you want to see photos of WP 705, click on the orange link to **WP 7xx** and then look for 705. Then the orange field on the right is a link to the photo.
    - **Unabridged table of the captions from all non-Meeker H/A photo collections:** It is a table of all the captions. Use your browser's "*find*" function to search for your custom search string.

- The Meeker Corporate Archives Collection has a dedicated index.

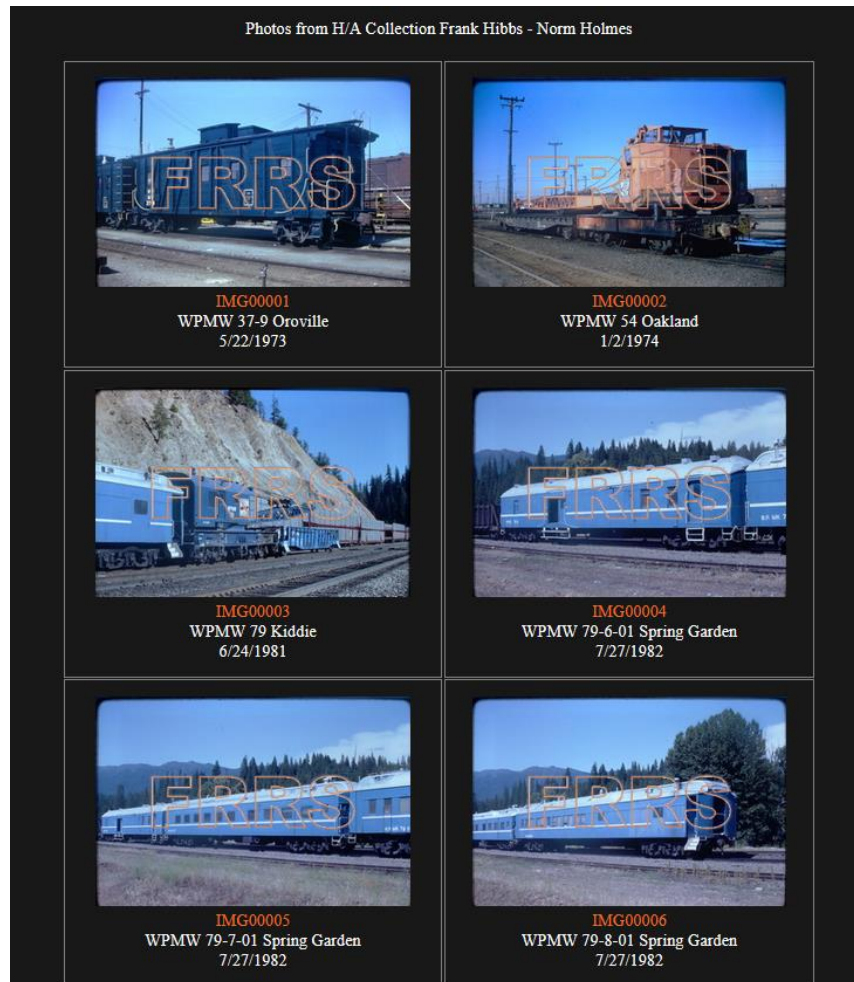


# H/A Collections Online January 2023

- AWK - AWK Railroad Book Master Inventory
- BMRRHS WP Photos - Twelve WP Steam locomotive images from the collection of Boston and Maine Employee Robert E. Chaffin between 1935 and ~1963.
- Carl Walker
  - Central California Traction Company - CCT
  - Tidewater Southern Railway - TSRy
  - Western Pacific Railroad - WPRR
  - Yosemite Valley Railroad - YVRR
- Charles R. Pfenning - WP Dispatcher Collection
- Collectanea Collection - Miscellaneous photos from several **SOURCES** (Definition from Oxford Languages for Collectanea: noun plural noun: collectanea - passages, remarks, and other pieces of text collected from various sources. Origin: mid 17th century: Latin, neuter plural of collectaneus 'gathered together'. )
- Frank Hibbs - WPMW Equipment, Motor Cars and Track Gang Collection
- Garth Groff - Freight cars, SN equipment, SN and WP locomotives
- Jack Palmer Collection
- Jim Aldridge Collection - Roster Slides
- John Endler Collection - California Zephyr Trips 1953, 1968
- Kent Stephens
  - Kent Stephens Photo Boxes
  - Kent Stephens SN Photos
- Meeker - The Western Pacific Railroad Corporate Archives / Kenneth J. Meeker Collection: a collection of WP corporate materials.
- Norm Holmes – Twentyfour collections from Norm's archives
- Portola Railroad Museum
  - PRM Collection #1
  - Jack Palmer - Early Days at the PRM
  - Paul Finnegan's PRM Photos from 1992
- Robert S. Webber – WP Motive Power mainly from the 1970's
- Virgil Staff
  - March 1976 Bicentennial Train (WP 1776) and Muni buses on flat cars.
  - March 1978 Long freight (maybe Altamont Pass), WP 3507 and WP 1776
  - May 1978
  - July 2001 Stockton, Amtrak, SP
  - Misc. Amtrak, ATSF, UP, SP, WP 1776, Stockton
  - Scanned 11-16-2017 Steam, Amtrak, Freights
  - Set 1,2,3 – large collection of train related photos
- Western Pacific Railroad Museum Photos
  - Paul Finnegan's Clover Plot Photos from 2017



# Example of a H/A Collection Page



Clicking on a thumbnail image will display a larger image.



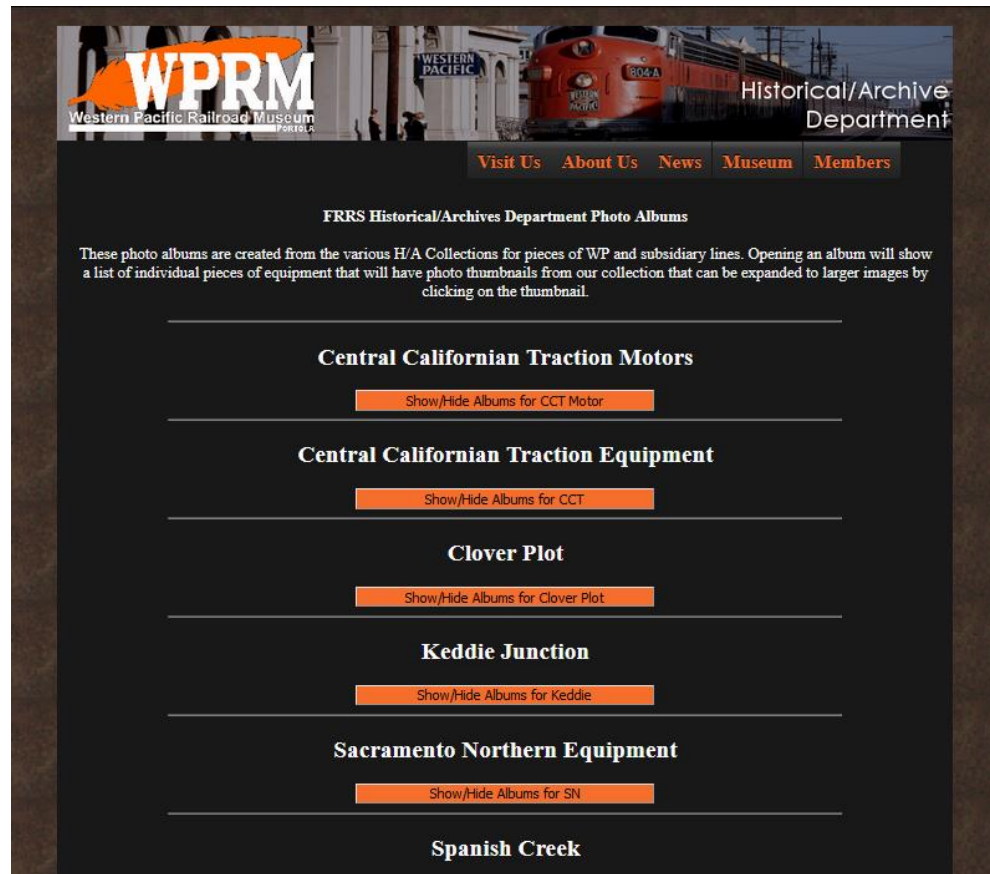
# Photo Albums and Contact Sheets

- FRRS Historical/Archives Department Photo Albums
  - These photo albums are created from the various H/A Collections for pieces of WP and subsidiary lines' equipment.
  - They are grouped by subject. E.g. all of the photos in the H/A Collections of WP 705 are listed in one place.
- FRRS Historical/Archives Department Collections Contact Sheets
  - These are created from the various H/A Collections for pieces of WP and subsidiary lines' equipment showing small photos of all the photos in the collection. If you hover over a photo, it shows the image file name.





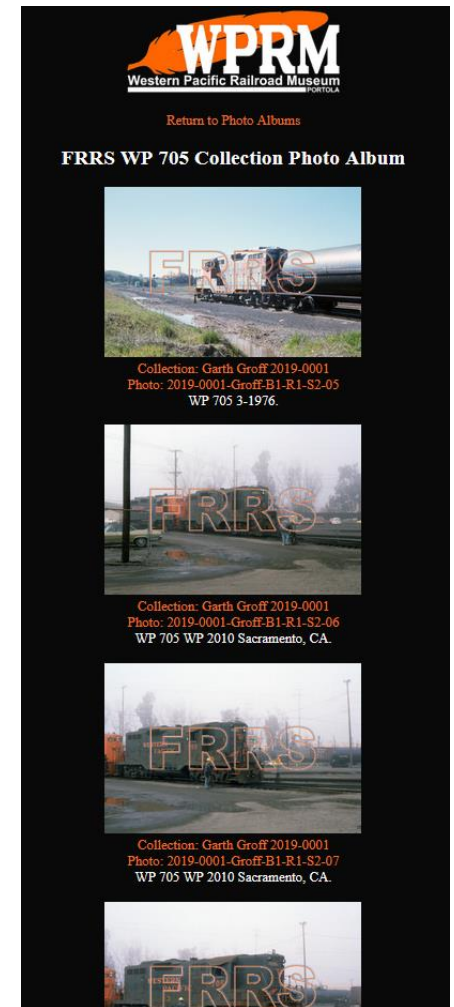
# Example of a Photo Album – WP 705



## Western Pacific Equipment 700-799

Show/Hide Albums for WP 7xx

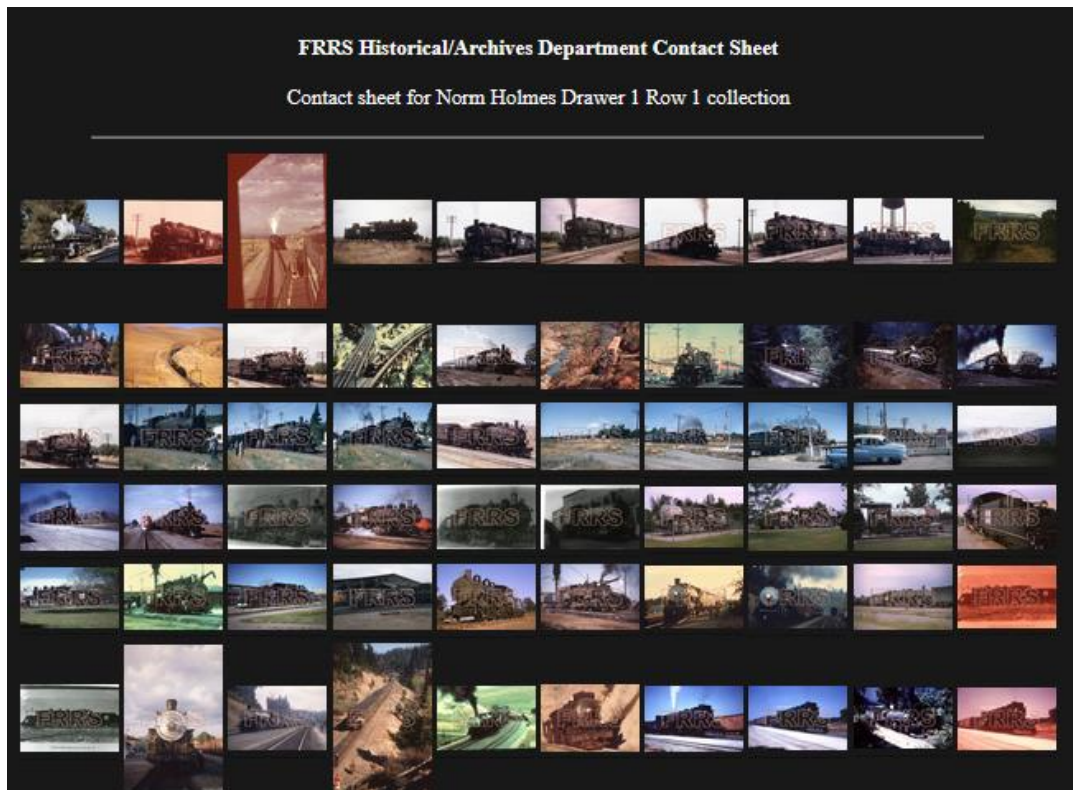
- WP 701
- WP 702
- WP 703
- WP 704
- WP 705
- WP 706
- WP 707



Top Photo Album page, scroll down to “WP Equipment 700-799”, click the “Show/Hide” button which will bring up the list of equipment, click on “WP 705” to see all the photos of WP 705. Clicking on a thumbnail photo will show bigger photo.



# Example of a Contact Sheet

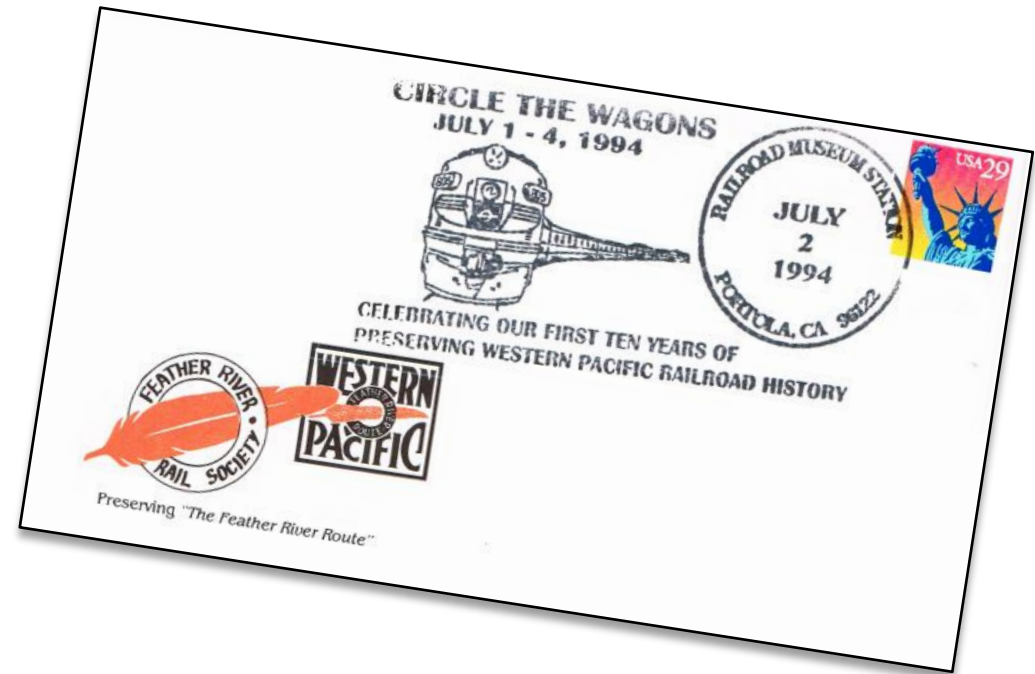


Hover your cursor over a photo to get the photo ID in the H/A collection.



# History of the FRRS/PRM/WPRM

- FRRS Conventions - Past Historical/Archive Department Conventions
- FRRS Display Room A/V Display Current Contents
- FRRS Historical Items
  - Circle the Wagons 1994
  - Conventions
  - Excursions
  - First Sub Club
  - From around the museum...
  - Operations
  - Rule Books
  - WPRRHS – The Tail Light #1



# FRRS Publications

- List of articles in *THE WESTERN PACIFIC Headlight* magazines
  - Table of contents from all 54 issues
  - Shows which back-issues are available from the WPRM Museum Store
- *THE WESTERN PACIFIC Headlight* Master Index
  - A comprehensive index of topics, articles and authors
- *THE WESTERN PACIFIC Headlight* Article Reprints
  - Selected article reprints from out-of-print issues.
  - This is a WIP and more are planned to be added over time
- *The Train Sheet* archive
  - Downloadable PDF files of all *Train Sheets* more than a year old
  - Google Custom Search Engine to search only the *Train Sheets*
- *The Train Sheet* Master Index
  - A comprehensive index of topics, articles and authors



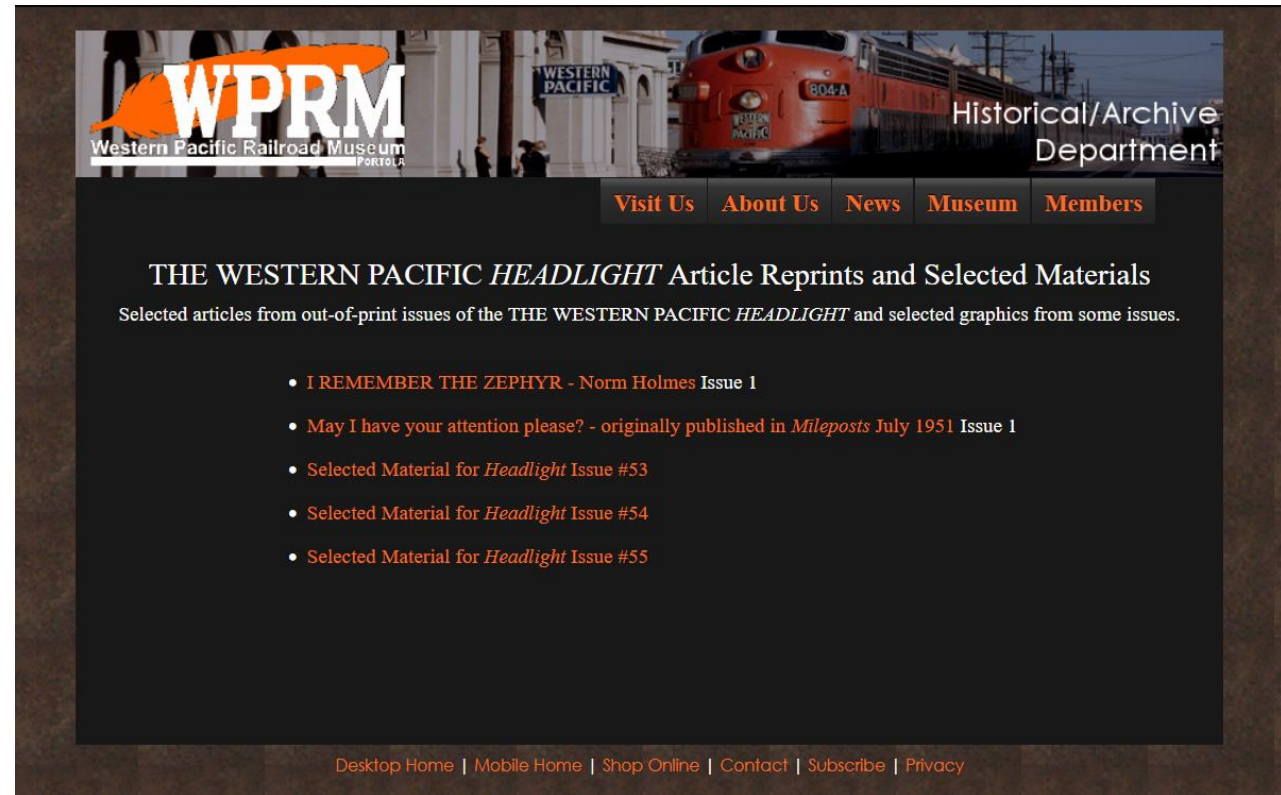
# THE WESTERN PACIFIC *HEADLIGHT*

## Article Reprints and Selected Materials

This page has some selected article reprints from out-of-print issues.

It also has information related to some recent *Headlights*.

It is accessed via “*THE WESTERN PACIFIC Headlight* Article Reprints & Selected Extra Material” link on the main H/A Department home page.



The screenshot shows the website interface for the Western Pacific Railroad Museum's Historical/Archive Department. The header features the WPRM logo and a navigation menu with links for Visit Us, About Us, News, Museum, and Members. The main content area is titled "THE WESTERN PACIFIC *HEADLIGHT* Article Reprints and Selected Materials" and includes a sub-header: "Selected articles from out-of-print issues of the THE WESTERN PACIFIC *HEADLIGHT* and selected graphics from some issues." Below this, a list of five items is displayed:

- [I REMEMBER THE ZEPHYR - Norm Holmes Issue 1](#)
- [May I have your attention please? - originally published in \*Mileposts\* July 1951 Issue 1](#)
- [Selected Material for \*Headlight\* Issue #53](#)
- [Selected Material for \*Headlight\* Issue #54](#)
- [Selected Material for \*Headlight\* Issue #55](#)

The footer of the page contains links for Desktop Home, Mobile Home, Shop Online, Contact, Subscribe, and Privacy.



# History of the WP

- The Feather River Route (a brief history)
- The First 50 Years -- 50 Candles Part 1
- The Final 80 Years -- 50 Candles Part 2
- Oroville Dam Project
- Presidents of the WP
- Western Pacific Advertising & Marketing Examples
- Western Pacific Subsidiaries
- Western Pacific Other Acquisitions
- WESTERN PACIFIC'S Western Division 1910-1930 - Virgil C. Staff
  - A very comprehensive history of the WP 1910-1930
  - 14 page PDF file



# Modeling Reference Information

Page that is dedicated to collecting material of interest to the WP modeler in one place...



WESTERN PACIFIC



## MODELING GUIDE TO 1950s WP FREIGHT CARS

This document was originally compiled by Garth Groff, 2004

Updates by Garth Groff and R.J. Dial, 2019

Updated with new information Kerry Cochran and Garth Groff January, 2021

*(downloadable PDF file)*

## Modeling Reference Information

- [Atheam Books and Information](#)
- [Freight Car Classifications](#)
- [Industrial Businesses in Downtown Reno \(new September 2021\)](#)
- [Industries on WP ONLY in CA-NV-UT \(new June 2021\)](#)
- [Magazines](#)
  - [Headlight Modeling Article Index](#)
  - [Magazine Articles on WP and WPRM](#)
  - [Other Magazine WP and Related Lines Modeling Article Index](#)
- [Model Manufactures](#)
- [Prototype Information](#)
- [Scale Pages](#)
  - [G Scale](#)
  - [O Scale](#)
  - [HO Scale](#)
  - [N Scale](#)
  - [Z Scale](#)
- [WP Convention Models](#)
- [WP Mileposts on Reno Branch](#)
- [WP Mileposts - System](#)
- [WP Modeling](#)
  - [EASILY MODELED WESTERN PACIFIC FREIGHT CARS - Flatcars, Gondolas and a Tank car - Dave Pires](#)
  - [Modeling the Boxcar](#)
  - [WP Modeling Notes](#)
- [WP Industry Guide Reno Branch 1970](#)
- [WP and Related Lines Layouts](#)
  - [Steve Cavanaugh's Layout with permission of MRHMag \(<https://model-railroad-hobbyist.com/>\)](#)
  - [Steve Cavanaugh's Layout - Keddie Wye](#)
  - [Steve Cavanaugh's Layout - Keddie Yard Office](#)
  - [Steve Cavanaugh's Layout - Portola](#)
  - [Moving Steve Cavanaugh's Layout to WPRM by Kerry Cochran September 2018](#)
  - [Video from Steve Cavanaugh's Layout:](#)

# Photos and Videos on the Modeling Reference Information Page

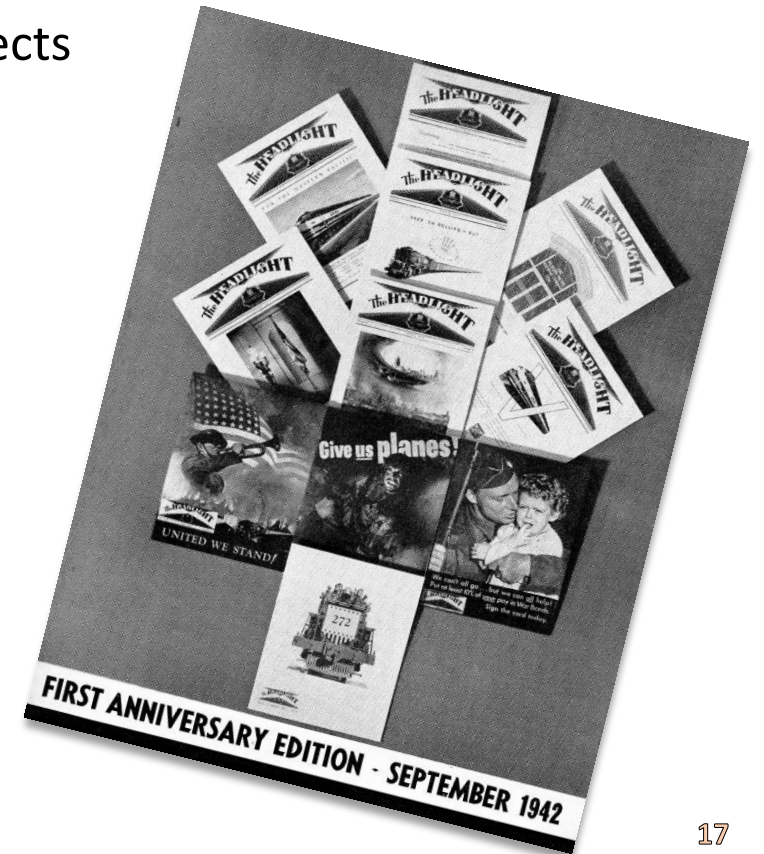
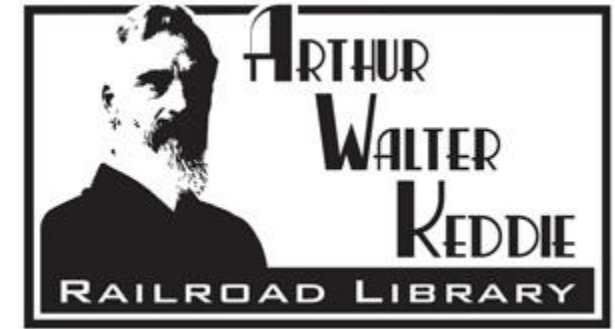
- WP and Related Lines Layouts
  - Steve Cavanaugh's Layout
  - Moving Steve Cavanaugh's Layout to WPRM September 2018
  - Video from Steve Cavanaugh's Layout
- Model Photos
  - Modeling Gallery photos
  - Models from the 1997 - 2019 Convention photos.





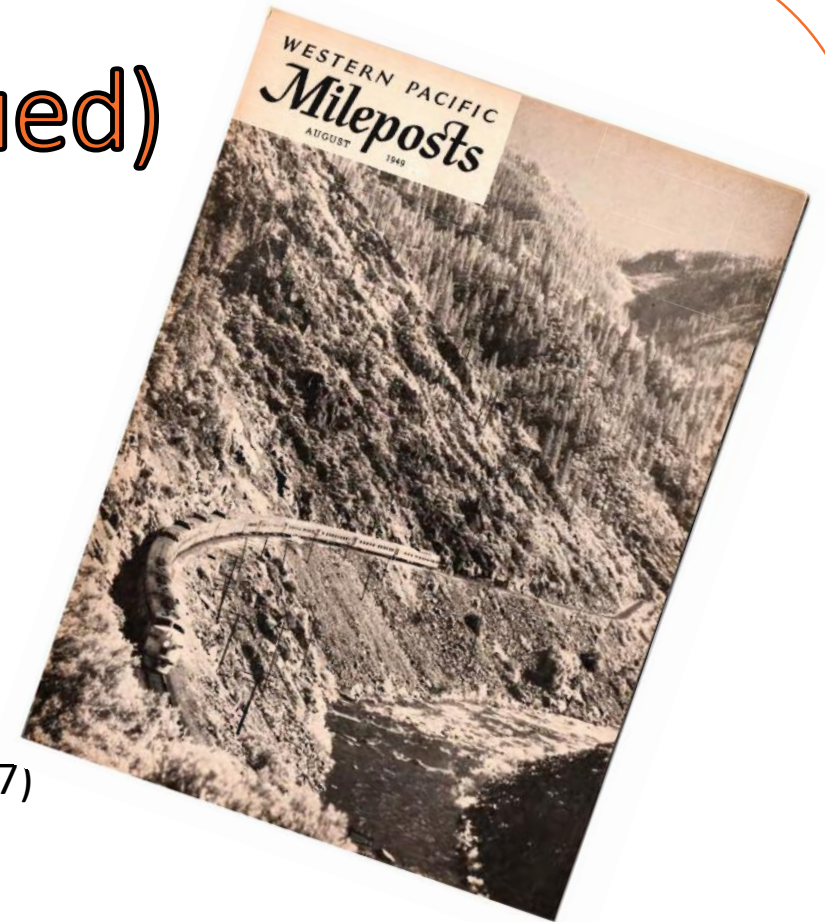
# WP Reference Material

- Arthur Walter Keddie Library
  - Who was Arthur Walter Keddie?
  - Library Policies and Procedures
- Book and video list on Western Pacific and Related Subjects
- Industries on WP ONLY in CA-NV-UT
- WP Common Standards
- WP Documents
- WP Equipment Rosters
- WP Forms
- WP Gasoline Motor Car Blueprint
- *WP Headlights* from the 1940's
  - All issues of the WP's employee magazine 1941-1949
  - Has Google Custom Search Engine to search only these issues.



# WP Reference Material (continued)

- WP Infrastructure
- WP Locomotive Roster 1938
- WP Locomotive Roster November 1977
- *WP Mileposts*
  - All issues of the WP's employee magazine 1949-1983
  - Has Google Custom Search Engine to search only these issues.
- WP Official Equipment Register – 1926
- WP Official Equipment Register – 1938
- WP Passenger Equipment - Chief Mech Officer (1928, 1937, 1947)
- WP Prototype Information
- WP Rotary 3
- WP Rotary 3 Time Lines
- WP Train Symbols, Schedules & Blocking Assignments as of May 25, 1973
- WP Tunnel List
- Western Pacific Symbols 1970's



# Other...

- ALL-TIME CAR ROSTER
  - (Northern Electric RY., Sacramento Northern RR., Oakland, Antioch & Eastern RY., San Francisco Sacramento RR. and Sacramento Northern RY.) compiled by Garth G. Groff
- JORDAN SPREADER - Operating Instructions, Parts and Diagrams
- SN Time Table Number 11 5-24-1931
- WP Related Links
- WP Videos



# FRRS Historical/Archive Department

- Kerry Cochran - Archive Manager
- Archive Team:
  - Jim Atkins
  - Frank Brehm
  - Greg Elems
  - Kenneth Finnegan
  - Paul Finnegan
  - Dale Sanders
  - Eugene Vicknair



# Please Come and Explore...

- We invite you to explore the Historical/Archive Department web pages.
- We encourage you to submit content so we can share with others.
- Please send comments, suggestions and submissions to: [historical\\_archive\\_dept@wplives.org](mailto:historical_archive_dept@wplives.org)

