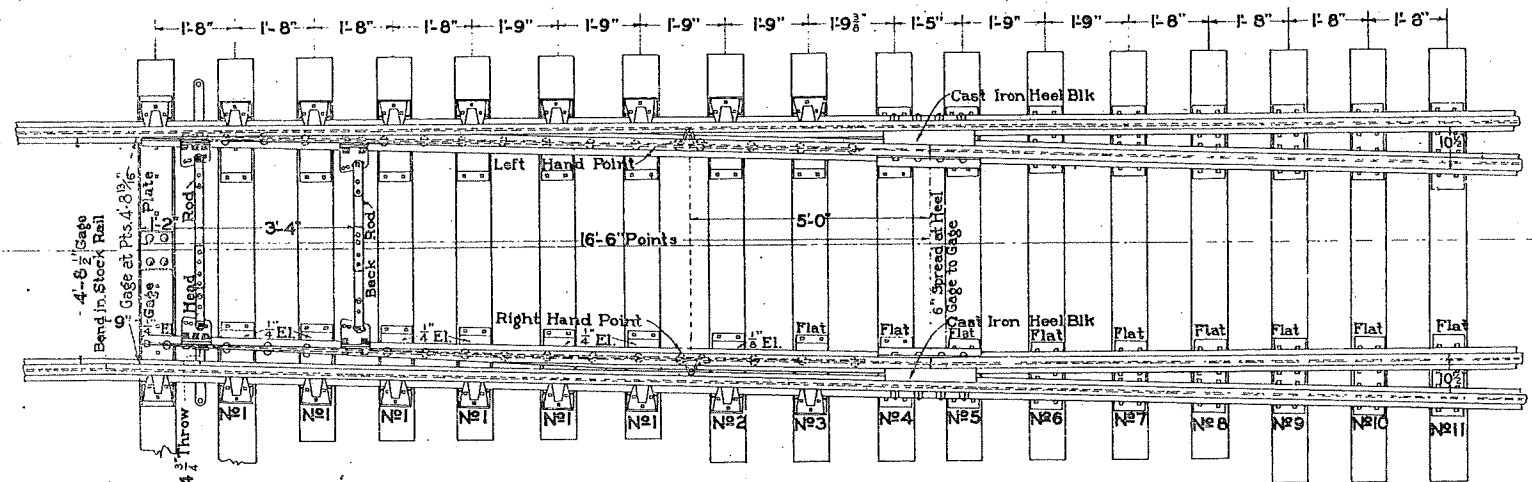


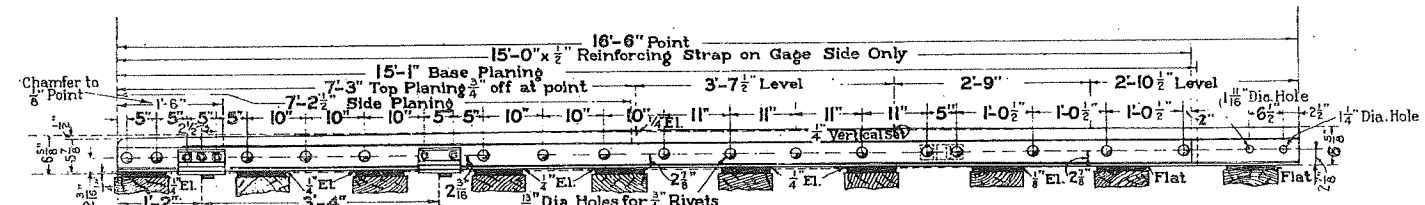
Specifications:— As per A.R.E.A. Specifications Appendix A, adopted March 1934.



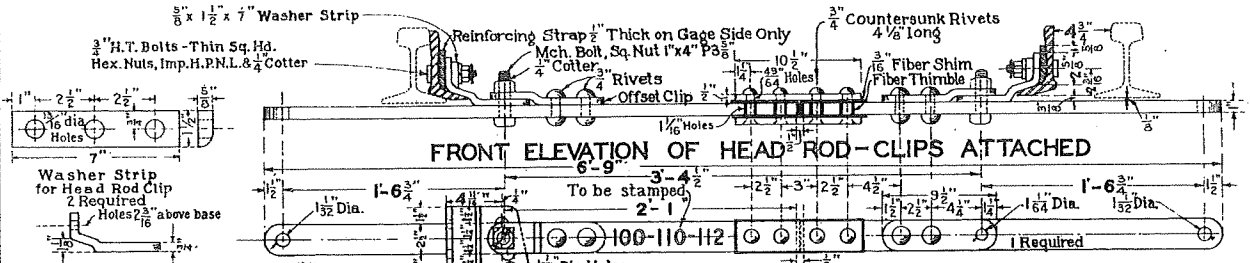
PLAN OF COMPLETE RIGHT HAND SWITCH ASSEMBLED

SHIPPING LIST - ONE SWITCH COMPLETE

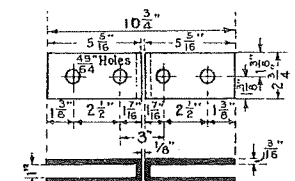
- 1- R.H. Switch Point 16'-6" Long reinforced one side only, with stop 1- L.H. and transit clips fastened to same.
- 1- Bundle of 2 (1 Head Rod-N#1 with rod bolts only. 1 Back Rod-N#2 with rod bolts only.
- 1- Thru Gage Plate, insulated, 4" Elev, 1" x 8"
- 3- Bundles (4 Each) Solid rolled A.R.E.A. Slide Plates 1" x 8" N#1-4" Elev.
- 1- Bundle of 4 - Solid rolled A.R.E.A. Slide Plates 1" x 8" (2-N#2- 1/4" Elev) (2-N#3-Blank)
- 2- Bundles (4 Each) Flat Heel and Runoff Plates 3/4" x 8" Each with 1-N#4; 1-N#5; 1-N#6; 1-N#7.
- 2- Bundles (4 Each) Flat Runoff Plates 3/4" x 8" Each with 1-N#8; 1-N#9; 1-N#10; 1-N#11.
- 2- Bundles (8 Each) Forged Rail Braces
- 2- Cast Iron Heel Blocks, each having 1 W.P. Standard 100% Angle Bar, 1 Heel Strap, 1 Thimble, 4 heat treated Track Bolts and Nuts, 4 Hi Power Nut Locks. Make 1 R.H. and 1 L.H. by setting Angle Bars.
- 16 - Bundles Total



SIDE ELEVATION OF LEFT HAND POINT

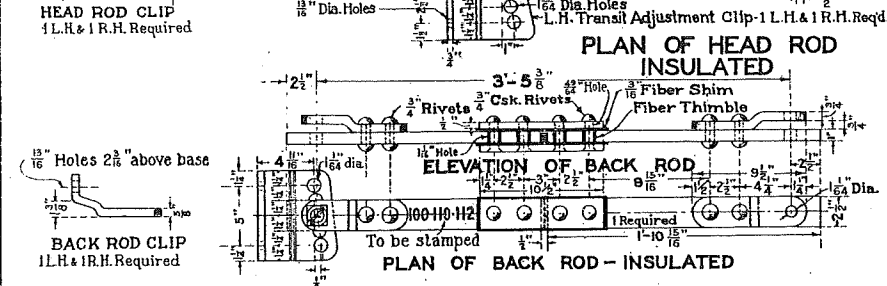


FRONT ELEVATION OF HEAD ROD - CLIPS ATTACHED



VULCANIZED FIBER SHIMS  
4 Required  
Note: Annealed steel rivets, riveted cold under hydraulic pressure. All bars tested for insulation before shipment.

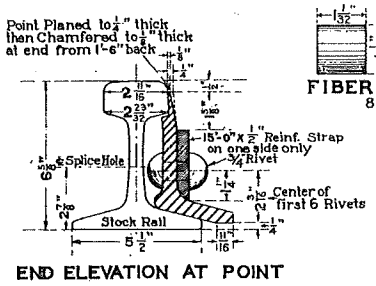
APPROVED: *J. M. Williams*  
CHIEF ENGINEER  
APPROVED: *E. W. Mason*  
VICE PRESIDENT AND GENERAL MANAGER



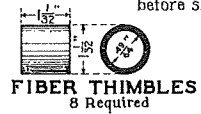
PLAN OF HEAD ROD INSULATED

ELEVATION OF BACK ROD

PLAN OF BACK ROD - INSULATED



END ELEVATION AT POINT



FIBER THIMBLES  
8 Required

THE WESTERN PACIFIC RAILROAD CO.

STANDARD  
16 FOOT 6 INCH SPLIT SWITCH  
112 LB. R.E. RAIL

NO SCALE

ADOPTED MARCH, 1935.  
Revised Nov. 1, 1935, 3/2/1936.