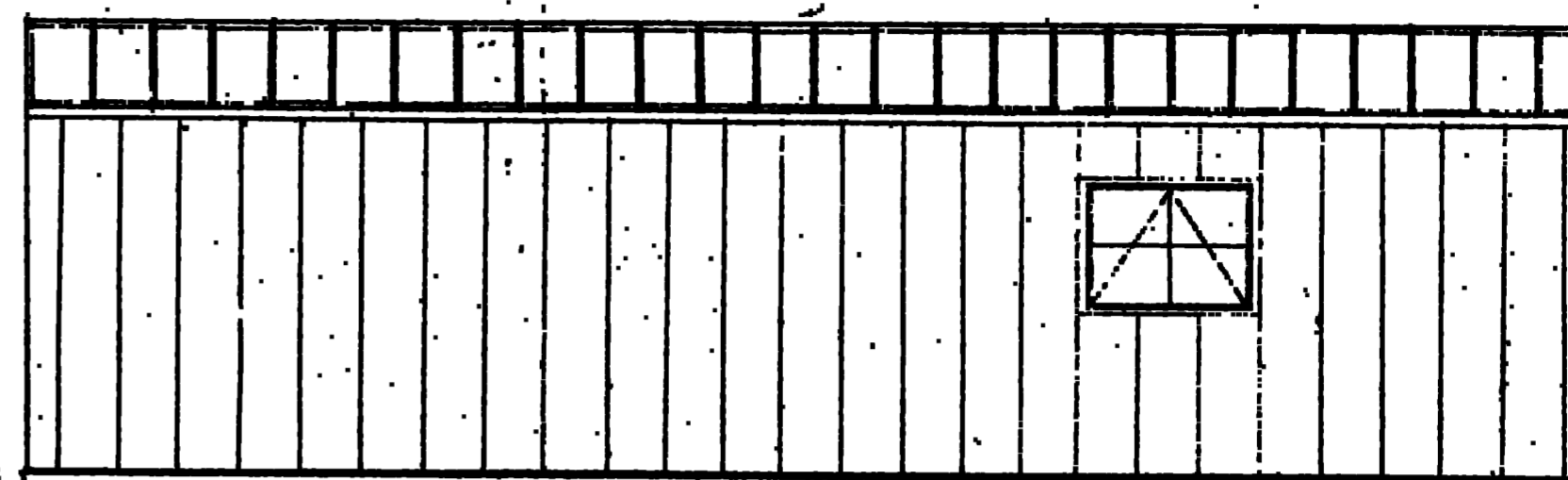
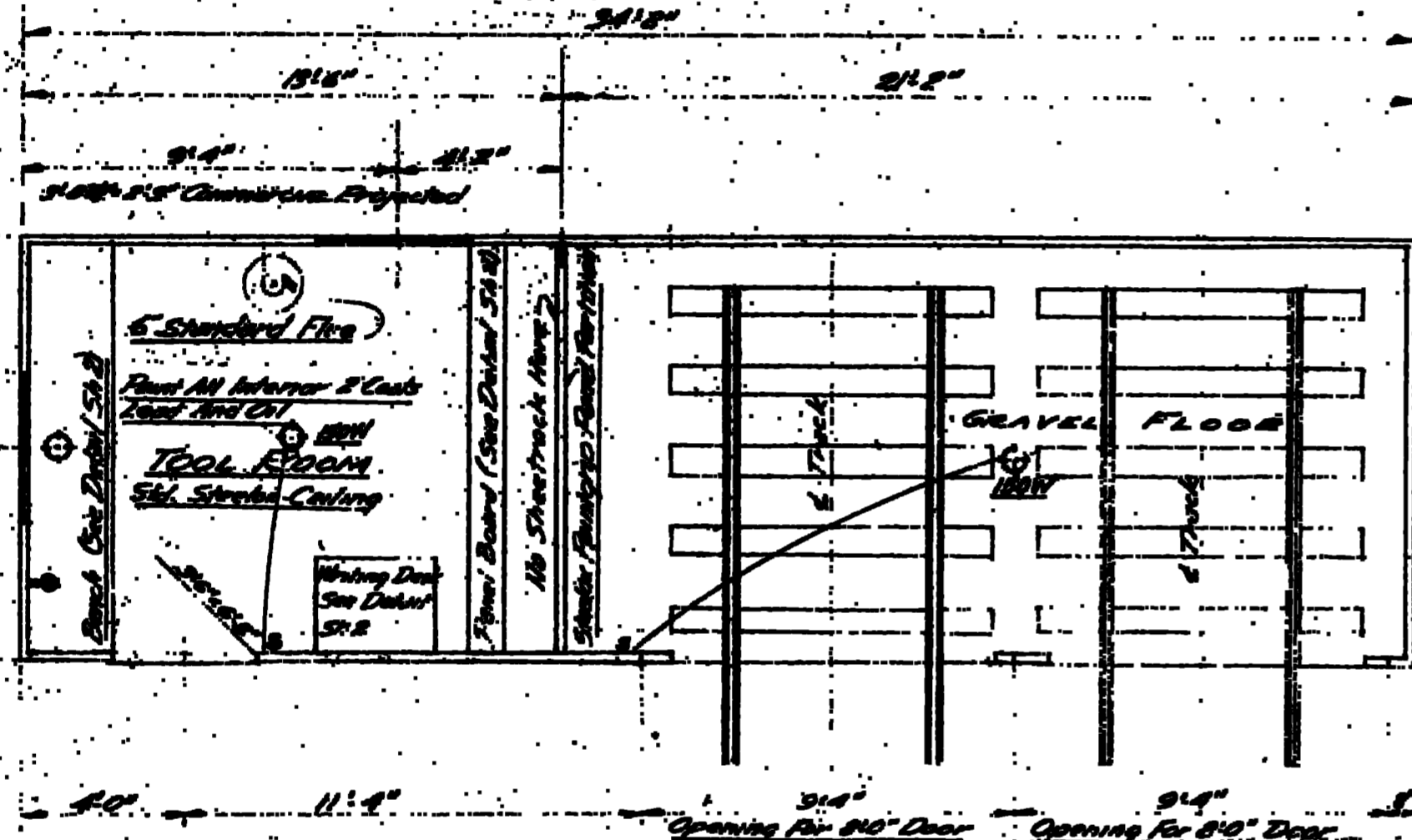


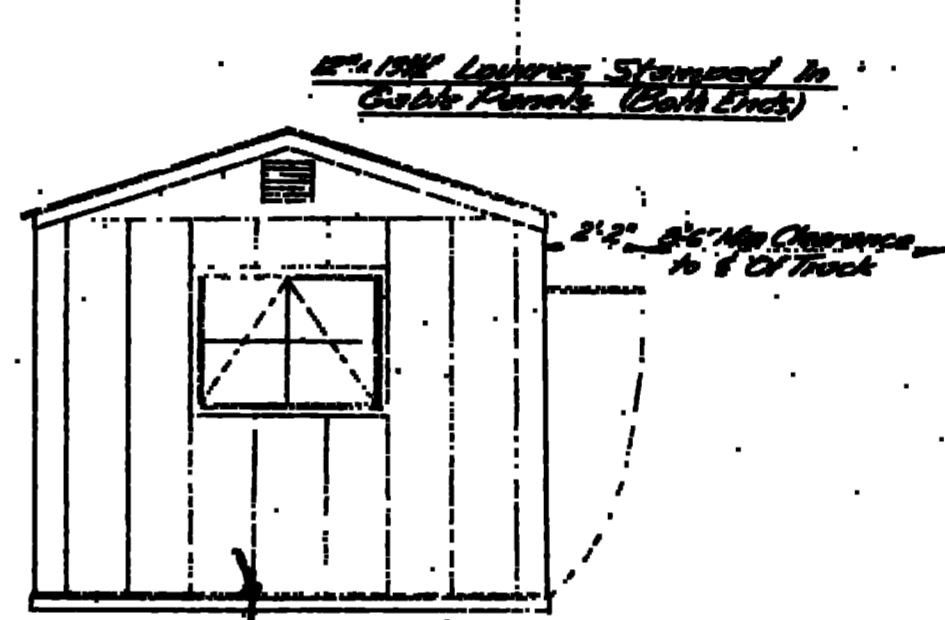
FRONT ELEVATION
SCALE 1/4" = 1'-0"



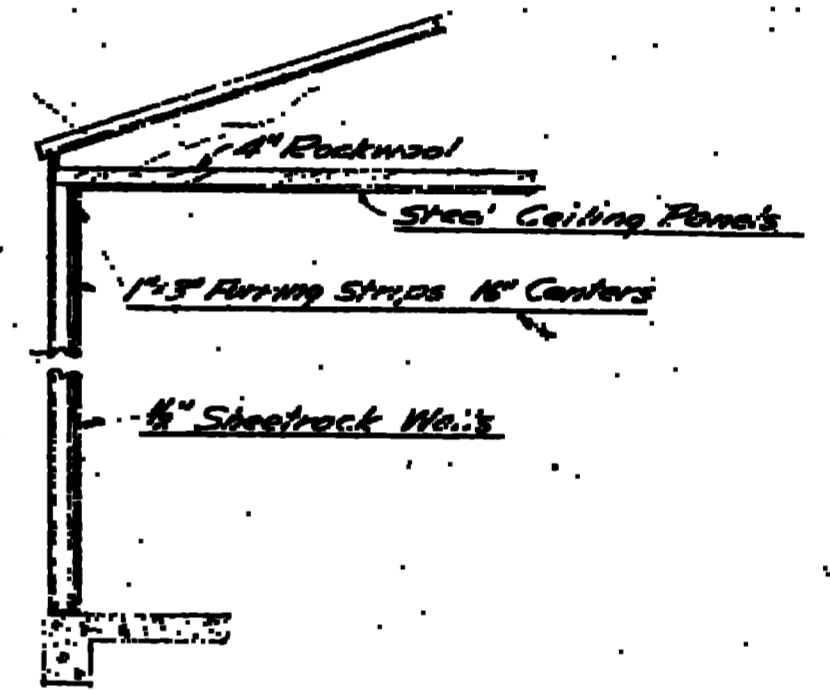
REAR ELEVATION
SCALE 1/4" = 1'-0"



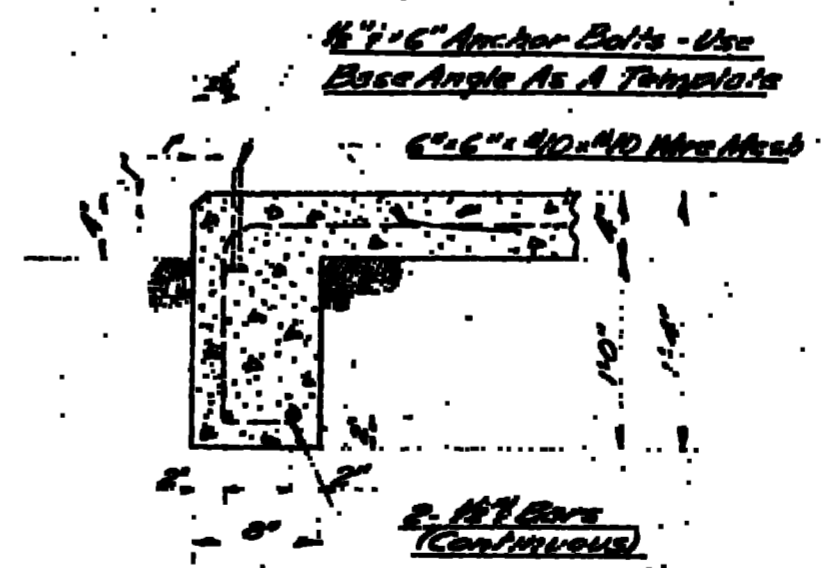
PLAN SCALE 1/4" = 1'-0"



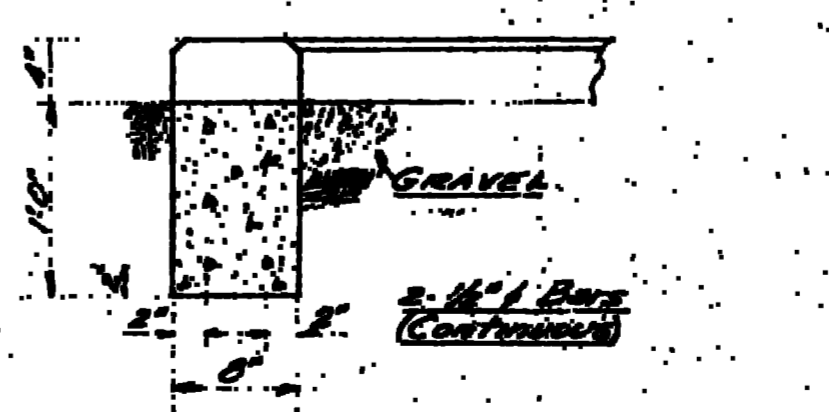
END ELEVATION
SCALE 1/4" = 1'-0"



TYPICAL SECTION THROUGH WALLS
Tool Room to have Steel Panel Ceiling with 4\"/>

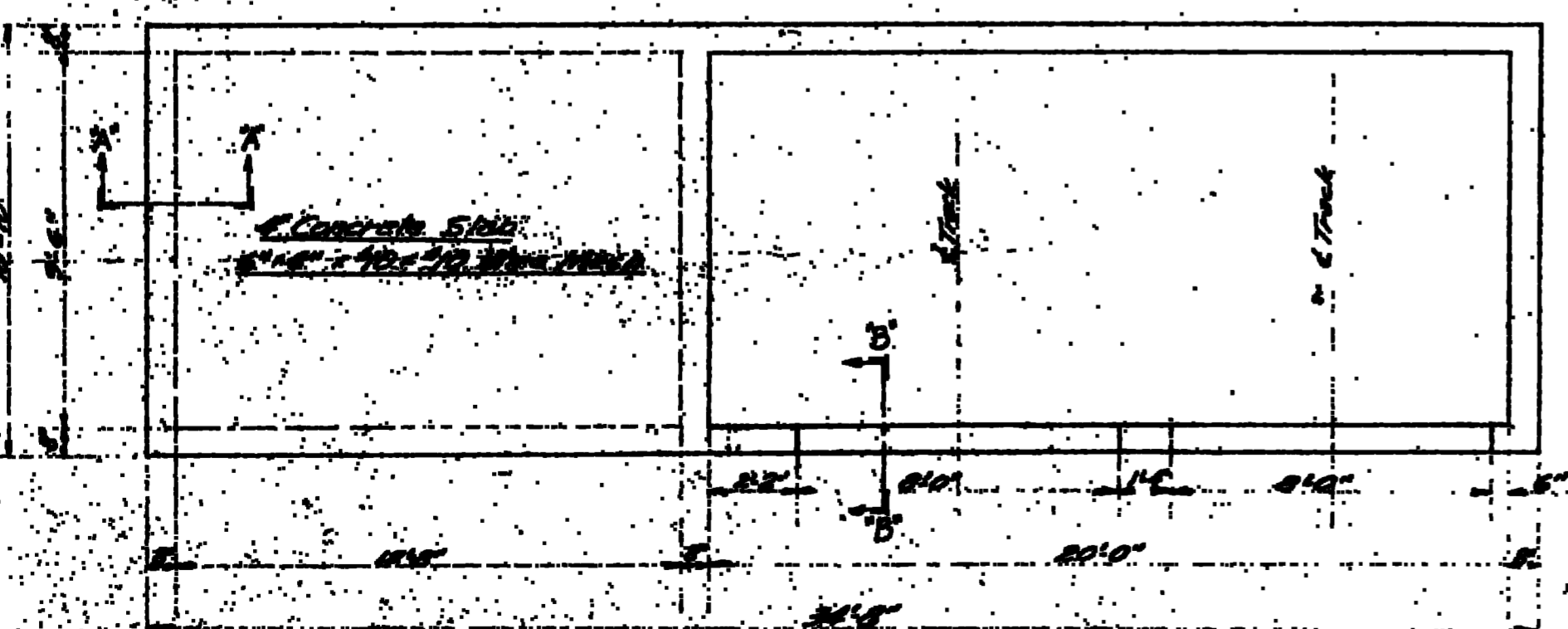


SECTION A-A SCALE 1" = 1'-0"

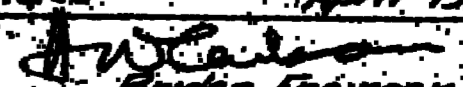


SECTION B-B SCALE 1" = 1'-0"

BUILDING TO BE CONSTRUCTED OF PRE-FAB STEEL PANELS AS MFG. BY ARMCO PRODUCTS CO. AND ASSEMBLED ACCORDING TO ARMCO STEELBOX BUILDING STANDARDS
WINDOWS TO BE COMMERCIAL PRACTICE TYPE STEEL FRAME ARMCO "P-22140 (2-PRG. D) SIZE 3'-8 1/2" x 2'-9"
TOOL ROOM DOOR TO BE INDUSTRIAL SINGLE SWING SIZE 3'-6" x 6'-8"
MOTOR CAR DOORS TO BE UPFOLDING CANOPY TYPE SIZE 8'-0" x 6'-6"
PAINT EXTERIOR: ROOF & WALLS ONE COAT OF ALUMINUM. INTERIOR DOORS AND E. HANDSOM. METRIC GREEN WALLS. ROOF TO BE GREEN. CEILING: TRUSS TYPED.



FOUNDATION PLAN SCALE 1/4" = 1'-0"

THE WESTERN PACIFIC R.R. CO.	
STANDARD	
TOOL AND TWO STALL MOTOR CAR HOUSE FOR SIGNAL MAINTAINERS	
"STEELBOX" PRE-FAB STEEL BUILDING	
Chief Civil Engineer - San Francisco Calif. SCALE AS NOTED April 15, 1949	
 Bridge Engineer	C.E.
Made C. GARDNER, CIV. CIVIL ENGINEER	B-3008
	5/1/49