



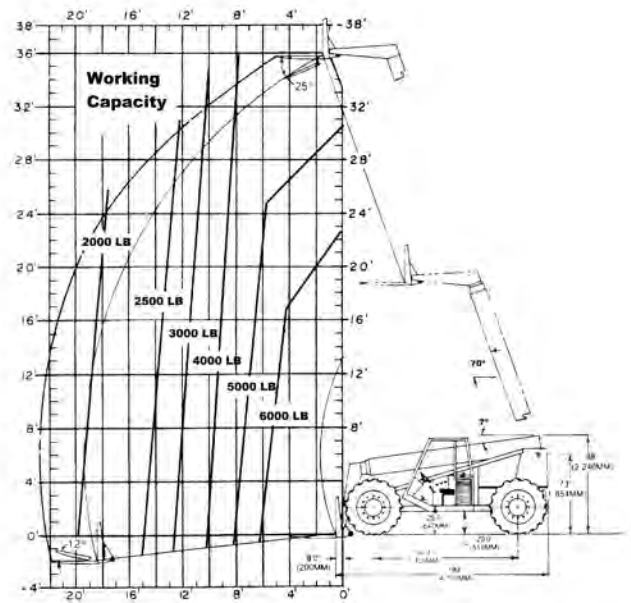
*LOED 534A Material Handler
- photo by Paul Finnegan*

George has since retired and his daughter Mindi now runs RFL. Mindi was as big of a part of the donation as her father was. The unit is very valuable to us and we use it for many jobs around the museum. It was very generous of George and Mindi to donate it and we are very grateful to them.

David Elems estimates its manufacture to be between 1973 and 1977, but cannot pin it down more than that without better records of the build dates by serial number, of which he has not found online. It was originally built with a Cummins 555 diesel engine, which was upgraded to the Cummins B3.9C that is currently in it; the upgrade had to have happened after November 1998, as that is when the current engine was manufactured. David's best guess would be that the engine swap happened in the mid to late 2000's.

There are still a few minor issues to iron out on it. David has trained some members on its safe use and further training on it will happen once proper operating procedures can be documented for it based on its "current" condition and the conditions of our site.

The Mechanical Department has a set of manuals for the Loed that are available in the Mechanical Department Library on the Mechanical Department webpage.



- photo by Kenneth Finnegan

WP 1503 Dedication

We plan to have a celebration at the museum to recognize the restoration and return to service of WP's last switch locomotive, WP 1503. The date is to be determined.

The society is proud that after an extensive cosmetic and mechanical restoration, she is returning to regular service at the museum this summer.

Plans for the celebration include an after-hours BBQ for members and guests, a run of the locomotive and then a special "blue-hour" photo session. Watch the website for more details for the date and come join the celebration and relive a part of history.